

*How do I ensure that my work is **REF-eligible**?*

*Upload it to Pure as soon as it is **accepted** for publication**

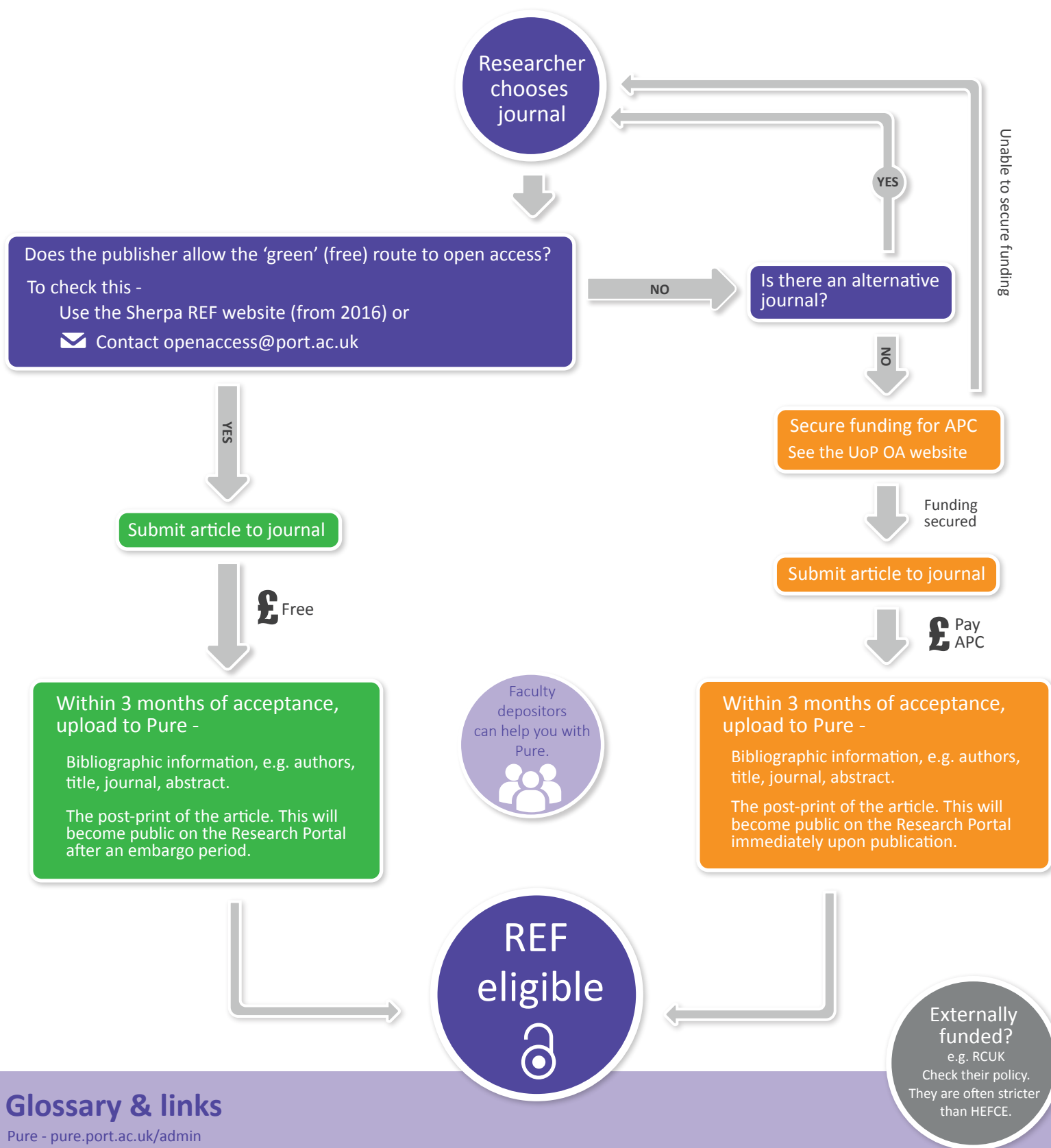
* This is HEFCE's REF Open Access policy, which applies to journal & conference articles with an ISSN. Please check that your publisher allows you to comply with HEFCE without any cost **before** you submit your work for publication.



Pure - pure.port.ac.uk/admin
Research Portal - researchportal.port.ac.uk
OA website - port.ac.uk/research/openaccess
Contact - openaccess@port.ac.uk

REF eligibility

HEFCE require journal & conference articles (with an ISSN) accepted for publication from 1st April 2016 to be open access.



Glossary & links

Pure - pure.port.ac.uk/admin

Research Portal - researchportal.port.ac.uk

OA website - port.ac.uk/research/openaccess

Contact - openaccess@port.ac.uk

Post-print - The full-text version of an article after peer-review changes. It does not typically include the publication-specific formatting, and is sometimes called the 'author's accepted manuscript'.

Embargo - Time delay before an article uploaded to Pure can become publicly visible.

APC - Article Processing Charge (APC) - a fee paid to the publisher to permit instant open access.