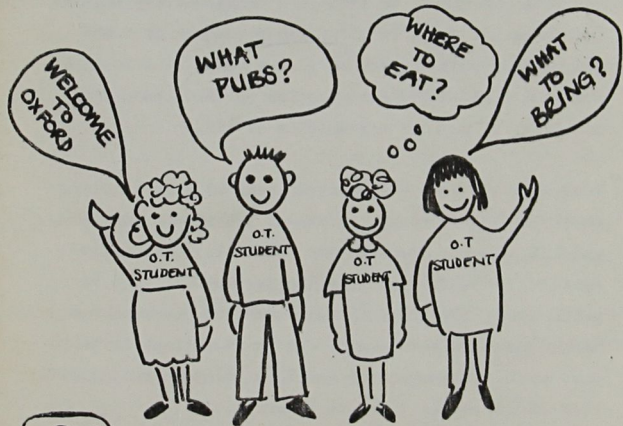


# • DORSET HOUSE • • ALTERNATIVE • • PROSPECTUS •



• 1985 •



7  
The Students Union members are:-

Katie Galpin (our Pres)

Soz Hilton (super Sec)

Simon " what's happening " Hughes (Treasurer)

Sue " has anyone seen her lately " Penna (Soc Sec)

Debbie Moore (Health Rep and sometimes here when Sue is'nt)

We'll be around at the beginning of term to cope with any problems or queries you may have and, if Sue gets organised, to arrange a couple of welcoming functions for you. It is'nt the strongest of S.U's and we need your support so please don't be afraid to come and find us (drinking coffee in the common room usually) if you have any worries at all.

Your main subjects in the first year will be anatomy, physiology, psychology, treatment techniques (crafts), and O.T. theory. Because the course is continually assessed you will find that the pressure of work is quite heavy, DON'T PANIC, the exams are never as bad as the pressure beforehand. It is important to keep your sense of perspective and to develop a good social life, which may at times be a necessity.

There will be elections during the first term to elect five new S.U. members from your year so its worth

2

thinking about whether you'd like to be a future students rep.

Lastly we would like to wish you Good Luck (?!?!?) and we look forward to meeting you and hearing (hopefully) all your new ideas.

P.S. - S.U. cards will be available during the first week that we are back, for the bargain price of £1.00, (you will need a photo, passport size). S.U. cards are invaluable items to have as they allow you discount in many places.

6

## ACCOMMODATION

### Hostel

Most of the rooms are shared and are not very large. There are a number of items we felt it was necessary to bring, including, a double plug, duvet, a kettle (if you want one in your room), desk lamp, soft loo rolls, pegs, and a radiator rack for clothes.

Everyone does their own washing, 35p a time, and a steam iron is an advantage. Teatowls, utensils and sauspans may be useful but there is cutlery in abundance.

The common rooms are functional, if not overly attractive, whilst there are a number of good electrical shops in Headington from which you may rent a telly, we have all found that buying a cheap black and white, or bringing a portable is less expensive in the long run.

The hostel rules may seem pretty extensive at first, but in fact, visitors are allowed to stay at weekends and Miss Baron (hostel warden) interprets the rules as flexible as she can.

### 60 London Road and Latimer Road

Cutlery is not needed, nor kettles, but small sucepans and sharp knives may life a little easyier at meal times.

4  
①

### Living out

For those who are going to live out a couple of things should be kept in mind.

### Rent

It is important to have a tenancy agreement with your landlord. Remember to read it before signing. Normally you will be expected to pay full rent during Christmas and Easter breaks and also during the summer vacation if you wish to retain your accommodation.

Forms will be available in the S.U. office to claim rent rebates for term, Christmas and Easter vacations. Presently you are eligible for rebate on any rent paid over £15.30, and it is always worth making a claim.

Social Security Benefit can not be claimed over Easter and Christmas vacations, but if you are a resident in Oxford during the Summer vacation you can sign on and claim unemployment benefit. Each case is assessed on an individual basis.

Mature students may find themselves eligible for unemployment benefit during all vacations, assessment depends on previous National Insurance payments. Again if in doubt claim!

Whilst accommodation in Oxford is a problem it is not impossible, and the Welfare Officer has a list of houses deemed suitable for D.H. students.

2

Other sources of information are:-

Newspapers- The Oxford Star  
The Oxford Journal  
The Oxford Times  
The Oxford Mail

Hospital notice boards.- John Radcliff II

Radcliff Infirmary

The Daily Information Sheet - Tel(0865)53377

Plus there are various flat agencies (see local telephone directory).

Things to consider when choosing a place to live:-

1. Distance from college-accommodation a long way out from college/Oxford may leave you isolated (and exhausted if you are cycling in each day). However, it maybe cheaper, so it really depends on your priorities.
2. Do I have to share a bedroom ?
3. Is gas and electricity included in the rent ?
4. To what extent is cooking equipment provided?
5. Is there a telephone ?

(1)

FRESHERS' FAIR

During the first 3 weeks of the Autumn Term, the second years 'attempt' to organise a Freshers' Fair. Information on societies at Dorset House, of which there are few, will be available, and hopefully there will be reps from the Poly to tell you about their societies. Second hand books and uniforms are also available here, but we found it advisable to have 1 uniform with us, or ordered straight away. The Poly and University also have Freshers' Fairs at the beginning of their terms.

BOOKS

Most of the books needed on the course can be found at the D.H. library, Poly library or the 24 hour library at the John Radcliff Hospital. Blackwells, one of the many good bookshops in Oxford, come up to D.H. within the first week with a supply of all the books you will need to start the course.

The ones we found most useful at first were:-

Hilgard, Atkinson and Atkinson  
 "Introduction to Psychology"

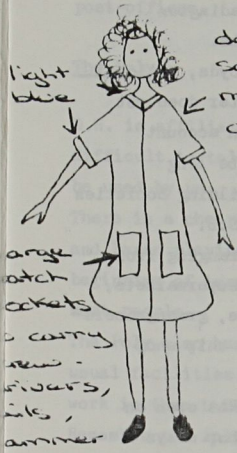
Basmajin "Primary Anatomy"

A good physiology text.

It is not necessary to purchase books before you arrive. It is useful to have with you enough money to tide you over the first few days, however, grant cheques should be already waiting in college and are given out during the first 2 days of term. In extreme circumstances ie, a grant cheque being delayed, it maybe possible to secure a loan from the bursar.

# Uniforms

O.T Uniform can be :-  
a dress.....



light blue

dark blue in colour  
so that you can be  
mistaken for the  
cleaner

large patch  
pockets

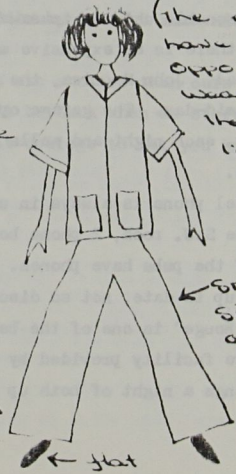
to carry  
new  
rivers,  
ink,  
hammer

and of course ...  
... a tape measure

or alternatively...

be a trendy jet  
setter with a turtleneck  
and trousers

(The men will  
have the  
opportunity to  
wear one of  
these things  
(little number))



smooth +  
silky  
acrylic

flat  
shoes

Nice flappy  
flares so that  
everyone can  
hear you  
coming

## AMENITIES IN HEADINGTON

Dorset House is close to the centre of Headington and its useful collection of shops and pubs.

All 4 of the main banks can be found - Lloyds, National Westminster, Barclay and Midland (the latter does not have a cash point). It is best to open an account before you arrive in Oxford as there may be long delays in getting everything cleared. Building Societies include Nationwide, Abbey National and T.S.B.

Headington has a varied supply of shops, ranging from gift shops to greengrocers. There are 3 supermarkets, a Boots and a number of butchers, florists, greengrocers and card shops. There is a good fish and chip shop and two reasonable chinese takeaways.

On Sundays there is an expensive mini-market open on Windmill Road. John Menzies, the paper shop stays open until mid-day. The garage opposite D.H. is open until 10p.m. each night and sells expensive basic necessities.

As the hostel phone is always in use, there is a phone in the S.U. room, 2 phone boxes in Headington and many of the pubs have phones.

The small, up to date, not so discreet cinema "Not the Moulin Rouge" is one of the best, if not the only real leisure facility provided by Headington. It has 2 showings a night of both up to date and 'classic' films.

There are in addition 2 drycleaning facilities, shoe  
repaires, a laundrette, several hairdressers, and 2  
post-offices.

The Poly

D.H. is affiliated to the Poly (although sometimes its  
difficult to tell) and all the facilities there can  
be used by us.

There is a cheapish bar, and there are often discos  
and bands playing. Its a cheap night out, and at the  
beginning of term proping up the bar is a good way to  
meet people.

The Poly also has a shop, bookshop, gym, and all the  
usual facilities. The library is also much nicer to  
work in than D.H.

Remember the Polys terms are shorter than ours (whose  
are'nt) and so they won't be back when we start but  
there will be a notice at college to let you know  
when the term starts.

1

## SPORTS

D.H. has no sports facilities of its own, but there is a lot of opportunity to join other sports clubs and use surrounding sports grounds. There is also opportunity to set up sports within D.H. using surrounding grounds and parks or the college itself.

If you are keen on a particular sport, or would like to try something new and exciting we recommend that you do make the effort, because as well as the enjoyment the sport provides, it may also provide a social outlet away from D.H. which you may appreciate later on in the year.

The Poly and University offer a large number of sports clubs varying from hockey, to fencing, to subaqua, to climbing, to dancing, to handgliding, to windsurfing. The Poly is very willing to accept D.H. students into their clubs. It is best to join at the Freshers' Fair, but it is possible to join later by going along to the sports office. There are 2 sports notice boards with all the information of the sports that are going on.

We can also join the University sports clubs. You may find that they are rather unwilling to accept you into the more competitive sports such as hockey and rowing but for others such as subaqua, fencing and dancing, these are no problem. It is best to join at the Freshers' Fair which is held in University

College at the beginning of term but, if you miss this don't worry, just look in Daily Information or on the University notice boards.

For the keen squash players, there is the Highfield Squash Club in Old Road, Headington, which alot of D.H. and Poly students use.

For the Tennis enthusiasts there is a wide selection of courts to use:

- The J.R. has 2 free courts
- Bury Knowle park in Headington has several but it is £1 an hour to use these
- There are several at the Poly - Free
- There are lots in the University sports grounds in Iffley Road, which we can use as long as you can look like a University bod, and successfully bluff your way out of any interrogation you might come up against, but this is unlikely.

Hunting hardly warrents being called a sport, but, if you have any ideas about racing down to the river, punts can be hired for about £2.50 an hour (£15-£20 deposit with I.D.) at the Head of the River (Folly Bridge) and Magdalen Bridge.

An ice rink has newly opened in Oxpens Road, and if you are interested in football don't forget the Oxford United football ground across the road from college.

DORSET HOUSE CHRISTIAN UNION



The C.U. is for students of all Christian denominations and anyone else who is interested. We meet regularly on Tuesdays from about 5.15 till 6.30, usually in the J.C.R.

The first C U. meeting of next term will be a special introductory meeting so that we can get to know each other a bit. We are also hoping to organise a C.U houseparty near the beginning of term.

The C.U. supports an active link with the O.I.C.C.U. and especially with St. Peter's College. Last year's events included a houseparty with St Peter's in the middle of nowhere. (It's good fun if you like mud baths, late night D.I.Y. pantomines and braying donkeys!)

" WHO SAID C.U. IS BORING ?" . . . . .

THIS IS WHAT WE GOT UP TO LAST TERM:

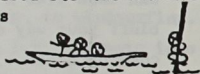
-Fundraising Week- £80 raised for the R.N.I.B., through car washing and cake stalls

- Punting and Picnicing

- Praise and Worship

- Speakers- everything from psychologists to catering managers

etc', etc', etc'.....



If you would like to contact us before we start back, please drop a line to:-

Catherine Bell (she's quite human really)

"Millway End", Millway, Reigate, Surrey. R H.2 OR.H.

As well as the main C.U. activities, a small group of Catholics meet occasionally for coffee and a chat. Anyone interested in joining us please make contact with Rebecca Barlow, Bernadette Mc Cabe or Helen Simpson at the beginning of term.

9

ALTERNATIVE SYLLABUS 1985

In September 1985, certain changes will take place in Dorset House as the "Diploma 1981" programme will be implemented. The following summarises what the new first year students may expect:

Year I - Overall Educational Focus:

Acquisition of knowledge of basic sciences and techniques that can be applied to treatment. The emphasis will be on understanding the profession and the development of a conceptual framework for practice. The role of the occupational therapist in various settings and situations will be explored and seen in the context of various health delivery systems. Concepts of disability and handicap will relate to the perspective of the patients' needs in society, and the holistic approach necessary for effective therapy. Personal skills and attitudes will be developed through group processes and consolidated on clinical practice.

Year I - Course Structure:

Occupational Therapy Studies: Principles, theory and practice for physical and psychiatric conditions. Treatment techniques will include Art and Drama, Computers, Light and Heavy Workshop Activities and Social Activities.

Human Biology and Disease: Anatomy, physiology, kinesiology and an introduction to medical sciences.

Behavioural Science and Disease: Psychology, sociology and psychiatry.

Professional Forum: For the development of personal and professional skills necessary for responsible professional practice.

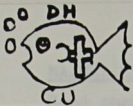
Clinical Practice: Summer Term.

Year I - Learning Situations:

Lectures, seminars, group experiences, practical session and self-directed learning are all included in the first year programme. Assessment for the school based subjects throughout the year takes the turn of assignments, tests, practicals and examinations. Students are also required to show competency on clinical practice.

Year I - Timetable:

All taught hours are time-tabled Monday to Friday between 9 a.m. and 5 p.m.. The first year students spend the Autumn and Spring Terms in the School and the entire Summer Term away on clinical practice.



# "NEW HORIZONS" Autumn '85

Sept'

17th Welcome Meeting for first years

24 D. I. Y.



Oct'

1st Steve Thomas

8th Worship - led by Cathy

15th Drama & Talk

22nd Come and find out led by Jane and Catherine

HOUSEPARTY - either 19/20 or

26/27

29th Bring a Thought

Nov'

12th Janet Quarry

18-22nd TEARFUND WEEK

Tues - Video/ Richman poem meal

Fri - Barn Dance

26th Prayer and Praise

Dec'

3rd Probation Officer

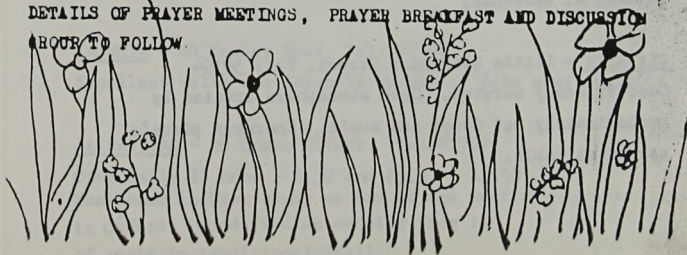
10th led by C. U. member

17th Christmas

Communion

N.B. ALL MEETINGS AT 5.15pm IN THE J.C.R. UNLESS STATED

DETAILS OF PRAYER MEETINGS, PRAYER BREAKFAST AND DISCUSSION HOUR TO FOLLOW.



②  
EATING OUT

This is a fairly extensive report covering the most popular restaurants in Oxford. Most places tend to be busy during term time, especially at weekends, even so, it's not usually necessary to book tables in advance unless it's for a larger party of people.

BERTIES - 9 Old High Street. Tel: 723343

English restaurant in a similar style to Browns, but not as recommendable. Reasonably priced and convenient, (Bogarts Pizza Parlour is directly above Berties), which serves a limited menu, but is good value for money.

BROWNS - 7-9 Woodstock Road. Tel: 511995

English restaurant, open 11.00-23.00 (including Sunday). Hanging plants, mirrors, and fans create an informal atmosphere for the most popular place with students. Getting a bit pricey, but still excellent value for money. Do not take bookings so queuing is often necessary but tables can be secured at the bar. It is very popular at weekends.

CLAREY'S - Little Clarendon Street. Tel: 54594

Good friendly service. Good atmosphere created by predominately red decor and music. Enormous pizza's served at table.

11

MAXWELLS - 36-37 Queen Street. Tel: 42192

Good choice of hamburgers, steaks etc., served with relish tray, baked potatoes, chips or side salad. Again very popular with students but large noisy atmosphere is not suitable for intimate evenings.

FOOR STUDENT - Ship Street. Tel: 47421

Varying reports on this restaurant. Generally provides meals of excellent value generously dished out. Menu fairly limited.

ANGLO-INDIAN TANDORI - 84 Cowley Road

Open 12 noon - 2.45 and 6p.m. - 12.00

Considered by many to be the best Indian restaurant in Oxford. A good varied menu, each dish carefully explained in English. Good friendly service.

MOTI MAHAL - 86 St. Clements. Tel: 47093

Open 12 noon - 2.45 and 6p.m. - 11.45 - 7 days a week

Specialises in Bangladesh food at very reasonable prices. Candle light and Indian music. Expensive wine list.

KASHMIR - 64 Cowley Road. Tel: 42941

Excellent value and friendly service. Take away service.

LA CANTINA - 34 Queen Street. Tel: 47760

Open daily 12 noon - 2.30 and 6p.m. - 11.30

Mentioned in Egon Ronay as one of the best restaurants in Oxford. Good Italian cooking from la of pasta to traditional Italian

expensive but well worth it. Advanced bookings necessary.

ST. MICHAELS PIZZA PALOUR - 3a St. Michaels Street.

Tel: 721523

Open daily 12 noon - 2.30 and 6p.m. - 11.30

Three bars. Pizza bar, serves what has been rated the best and cheapest pizza in town, with a good selection of side dishes. Good service and atmosphere. Worth a visit.

SWEENEY TODDS - 6-12 George Street Tel: 723421

Justifiably popular eating house. Wide menu, enormous pizzas and desserts, all excellent value for money.

Trendy decor creates informal atmosphere. Good music on occasions.

SPEAK EASY - Queen Street

Pizzas large and filling at a reasonable price.

Cocktails are far from lethal. Live music Thursday and Sunday.

GO DUTCH - 18 Park End Street. Tel: 40686

Little place near the railway station serving a variety of savoury or sweet pancakes, all priced around £2.50.

Unfortunately a little out of the way.

CHIT CHAT - 1 Broad Street Tel: 240973

Italian food served in an informal atmosphere by pleasant

staff. Reasonably priced, for Oxford, nice and quiet on Sundays.

FELLINIS - Cornmarket Street

Italian food, good vegy pizzas, relaxed atmosphere with pleasant classical music in the background. Relatively reasonable, worth a visit or as Simon says "check it out".

HAMSTERS - Cowley Road

Much of the S.U. funds have been frittered away here on the pretext of entertainment. Reasonable food, vegy meals available, very reasonably priced but remember to take your own drink and plenty of it! Closed Mondays.

MARABI - London Road (next door to college)

Good Indian restaurant, slightly expensive but well worth the money. Good service with a nice intimate atmosphere.

2

## PUB GUIDE

Whether it's to celebrate or commiserate, most students find a suitable excuse to crawl their way around the pubs, since it's probably still the best form of fun on a student grant.

The following views on pubs are the general opinions of students. Even so, our conception of 'a good pub' may not be yours, so visit them all and decide for yourself !

### BEAR - Alfred Street

Said to be the oldest pub in Oxford, and possible the smallest. Collection of old ties cover the walls. Usually very crowded with University students. Lively atmosphere.

### BELL - Old High Street, Headington.

Not very popular with the students

### BLACK BOY - Old High Street, Headington.

Sells all five non-rells Ales, but is convient for the Oxford United football ground.

### BRICKLAYERS ARMS - Old Marston

Very pleasant pub of mixed clientele. Regular jazz night on Thursday. Serves Ind Coope and reasonably priced bar meals.

BRITANNIA - London Road, Headington  
Nearest pub to D.H. , and good for lunch time drinks.  
Friendly service, juke box, very basic surroundings,  
very much a local pub.

CAPE OF GOOD HOPE - The Plain  
Bad and unfriendly reputation with students, (which is  
bound to continue after putting this in the prospectus)  
Basic decor.

CHEQUERS - Off High Street, Oxford  
Large, three bar complex, usually crowded. Mixed  
clientele - some Poly drinkers frequent the place.  
Good juke box. Serves Burton and good bar meals. Slightl  
expensive.

CHENEY BAR  
Small, quiet with very little pub atmosphere. No good  
beers but cheaper than pub prices. Music is usually  
students own tapes. Occasionally used for Poly discos.

THE EAGLE AND CHILD - St. Giles  
Slightly older clientele. Serves Ind Coope. Not  
really a student pub.

THE ELM TREE - Cowley Road  
Beer is reasonable. Worth a visit particularly on  
the way to the P.I.P.,(a regular haunt of Simons)

FIR TREE TAVERN - Iffley Road

Pub for the locals but also popular with Poly drinkers. Live music on Sundays. Serves Ind Coope. Very friendly.

GLOUCESTER ARMS - Friar's Entry (nr Debenhams)

Usually packed with Uni drinkers. Best to avoid when the Playhouse is emptying to avoid the stampede.

THE GRAIES - Gerge Street

Popular with theatre goers. Again best to avoid when the theatre empties. Sells Morrells. Snacks served until 9p.m.

HALF MOON - St. Clements

Small with basic decor. Serves best Guinness in town. Popular with the Irish. Very friendly.

HEADINGTON (S.U.) BAR - see info on the Poly

THE HEAD OF THE RIVER - Folly Bridge

Just redecorated on going to press, so S.U. hadn't got round to revisiting. Nice setting.

KINGS ARMS - Hollywell Street

Best beer in Oxford - Wardsworth Six X, Brakespears bitter, Bass, Morlands Pale Ale - the list is endless, all at reasonable prices. Has justified reputation for being one of the few pubs tolerant of gays.

4

LAMB AND FLAG - St. Giles

Pub of contrasting drinkers - punks, trendies, etc, which can be interesting or awful depending on your taste. Good juke box.

MITRE - Turl Street

Nice range of real ales served in three bars. Full of American tourists. Pseudo-elegant decor.

RED LION - Gloucester Green

Round the corner to the theatre. Serves Ind Coops. Juke box. Basic decor but good atmosphere.

STAR ROYAL - Rectory Road

Very popular with Poly drinkers. Friendly service, usually crowd. Good juke box. Some say it lacks atmosphere but still one of the better pubs.

TURF TAVERN - off Hollywell Street ("find it if you can")

An extensive but expensive beer list. Full of character but rather unfriendly staff and is usually very crowded especially in the tourist season.

TEMPLE BAR - Cowley Road

Popular with Poly drinkers. Good beer. Offers billiards. Usually crowded with nowhere to sit. Basic decor but full of 'hidden' charm!

WHITE HART - Old Headington

Very nice old pub. Excellent snacks. Fairly good juke box. Usually crowded but with a good atmosphere. Worth a visit.

WHITE HORSE - London Road, Headington

One of the nearest pubs to D.H. usually crowded. No juke box. Very nice food but slightly expensive. Good place to take the parents.

WHITE HORSE - Broad Street

Very pleasant small, old pub. Good bar snacks.

RECENT S.U. CONQUESTS

BREWHOUSE - Gloucester Green

New pub, nice decor, very "in". Jazz on Sundays in the Summer. Worth a visit, but get there early if you want a seat.

FARKEIC - St. Clements

Very trendy cocktail bar with an extensive list of cocktails. Good music in the background, very trendy decor. Packed at weekends.

RAT HOLE - Cowley Road

Very small, pub for the locals, reasonable juke box.

1

NIGHT CLUBS

BACCHUS WINE BAR - 29 George Street Tel: 726906

Although not a nightclub in the stricter sence of the word this small, darkwood panelled bar provides a minute dance floor with good music for an alternative night out. Extensive wine list, candle lit tables. Jeans not welcome.

BOGARTS - The Plain Tel: 41047

Tuesdays over 28's. Members and guests only, although non-members freely admitted by signing a book. An 'OK.' 3-storeyed building with several bars. Tends to be frequented by foreingners and over 30's on the prowl, so be warned!

DOWNTOWN MANHATTAN - George Street Tel: 43041

Part of the Apollo. Smallish dance floor surrounded by mirrors, recently redecorated. 'Mudd Club' held here on Wednesdays, predominantly a student night and usually the best night to go. Drinks fairly expensive.

BOODLES - Westgate Centre

Student orientated disco. Weekends don't usually liven up until after the pubs have shut. Drinks at normal pub prices.

THE COVEN - Oxpens Road Tel: 242770

A gay club with straight nights. Good alternative disco

2  
and a good night out if you want to dance with out harrasment. (Simon has had his bottom pinched here!)

CINEMAS AND THEATRES

ABC CINEMA - Gearge Street Tel:44607

24 hour recorded message of details of current programmes.

Three screens, fairly large seating arrangements.

£2.20 per programme.

ABC CINEMA - Magdalen Street Tel:43067

Only one large screen. Late night shows on Saturdays.

Both show the usual ABC circuit films getting them fairly quickly after initial release in the capital.

THE PENULTIMATE PICTURE PALACE - (P.P.P.) Jeune Street

Tel: 723837

Sister cinema to 'Not the Moulin Rouge'. Primarily for students. Private club showing a wide range of old, new and off-beat films. Membership £1 a year, each film £1.25, well worth joining. No smoking. Does not advertise in local papers - has own programme sheets.

PHOENIX CINEMA 1 and 2 - Walton Street Tel: 54909

Recorded 24 hour service. Both private club ( for late night shows) and open cinema ( for matinees and evenings)

Two screens. Used to specialise in foreign films but

16  
2

now has a similar mix to P.P.P. Around £2.00 per programme. No smoking. Late shows Thursday, Friday, and Saturday at 2300.

APOLLO THEATRE - Gearge Street Tel: 44544/5

Opera, ballet, professional plays, musical and pop concerts. Xmas pantomime. Programmes advertised in local papers.

PLAYHOUSE - Beaumont Street Tel: 47133

The University theatre. Professional and Uni drama. Concessions include student stand-by tickets (cheap unsold tickets that can be collected on the afternoon or night of the performance).

PEGASUS THEATRE - Magdalen Road

More alternative entertainment can be found here. A wide selection of small touring companies visit, with plays about, women in society, racism etc. They also have mime, music from other cultures, drama workshops, and discos. £2.00 with a student card

MUSEUMS, ART GALLERIES

BRASS RUBBING CENTRE - High Street St. Mary's Church

Tel: 721200

Daily 1000 - 1800 (1100 - 1700 in winter). Exhibition of replicas from original brasses, mostly local. Free admission. Charge for rubbing to cover cost of materials.

OLD FIRE STATION - Arts Centre 40 George Street Tel:722648

Run by Oxford Area Art Council. Variety of classes and workshops including drama, batik, photography, yoga, keep fit, silversmithing etc. From £1.25 a class or £12.50 a term. Open Monday - Friday 1000 - 1730

MUSEUM OF OXFORD - St Aldates Tel: 815539

Tuesday - Saturday, 1000 - 1700. Permanent exhibition on the story of Oxford. Plus changing programme of special exhibitions. Students 10p admission.

ASCHMOLEAN - Beaumont Street

Open 1000 -1600. Oxford's main museum. Collections of sculpture, pottery, jewellery and paintings. Changing exhibitions. Free admission.

UNIVERSITY MUSEUM - Parks Road

Open 1000 - 1600. Main collection in natural history, earths evolution. Mammals and birds and butterflies. Mounted skeletons of dinossaur etc. (Good for anatomy

17  
(17)

revision on a large scale !) Leads into Pitt Rivers  
Museum.

PITT RIVERS MUSEUM - Parks Road Tel: 57467

Open 1400 - 1600, Monday - Saturday. Fascinating  
collection of Egyptian mummies, shrunken heads, guns,  
etc. Free admission.

PHOTOGRAPHIC COMPETITION

We will be running a photographic competition at the  
beginning of term for the most amusing or interesting  
Summer holiday photo, so don't forget to bring your  
snaps with you.

See you next term - Love From the S.U. !

to send for the pictures!

invitation on a large scale (1) ...

ST. MARY'S CHURCH - High Street St. Mary's Church

ST. MARY'S CHURCH - High Street St. Mary's Church  
Open for ...  
of ...

ARTS CENTRE - Arts Centre 40 George Street Tel. 22222  
run by Central Area Art Council. Variety of classes and  
workshops including drama, batik, photography, etc.  
Tel. 22222, 22222 etc. Free ...  
Tel. 22222, 22222 Monday - Friday 10.00 - 1.00

ARTS CENTRE - Arts Centre 40 George Street  
Tuesday - Saturday, 10.00 - 1.00  
Tel. 22222, 22222 etc. Free ...

ARTS CENTRE - Arts Centre 40 George Street  
Tel. 22222, 22222 etc. Free ...

ARTS CENTRE - Arts Centre 40 George Street  
Tel. 22222, 22222 etc. Free ...