

Finding a company overview and comparing share prices.

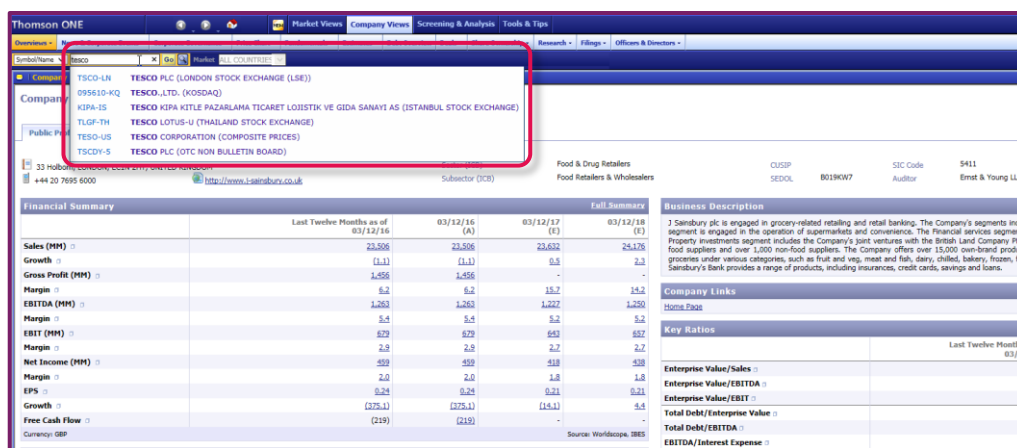
ThomsonONE only works in **Internet Explorer**, it does not work in Chrome or Firefox.

If you cannot access ThomsonONE, please check that you are using Internet Explorer as your browser. We apologise for the inconvenience, we are working to resolve this with the supplier of ThomsonONE.



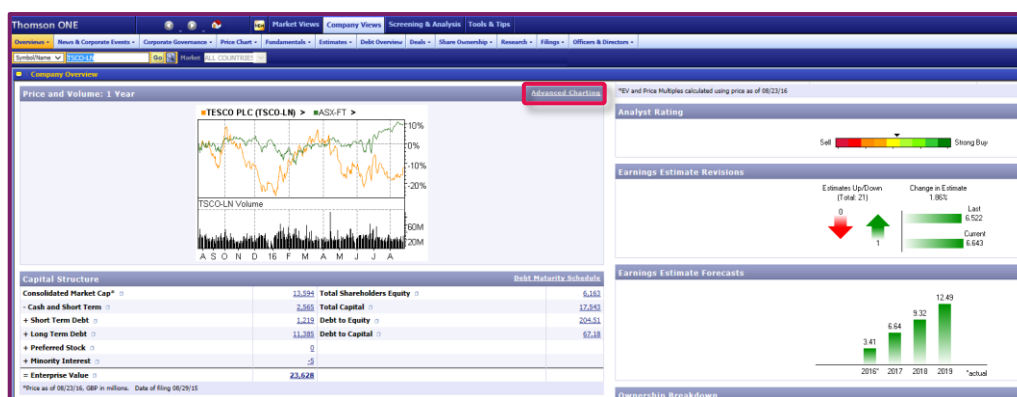
This guide shows you how to find a company overview in ThomsonONE. It also shows you how to find the share price and volume, see how this has changed over time and compare a company with its rivals or the FTSE index.

- 1 From the home page you can find an overview of the information ThomsonONE has about a company. Type a company name into the search box then select the company you are interested in (Tesco is the example below).



- 2 You can now see the company overview which gives you an instant review of the company's financial situation and other background information.

To change the display or to compare Tesco with other companies, click on **Advanced Charting**.

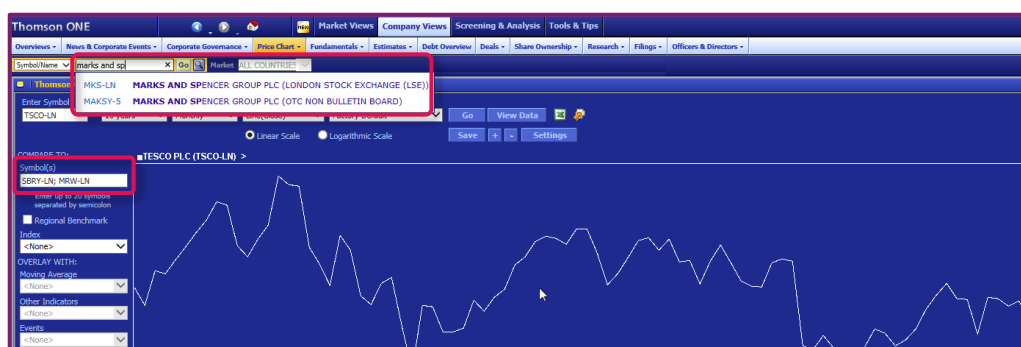


- 3 Use the options under **Time Period** change the period of the graph to **10 years**, and the frequency to **Monthly** to see the longer term changes.



- 4 Then under **Compare To:** enter the Quote Symbols, **SBRY-LN**, for **Sainsbury (J) PLC**, **MRW-LN**, for **Morrison (Wm) Supermarkets PLC** in the **Symbol(s)** search box, separated by a semicolon.

If want to compare another company and you know the symbol, you can type this in as well. If you don't know the symbol, enter a company name in the search box to find the symbol (Marks and Spencer is shown as an example below).



- 5 Finally, select **FTSE 100** from the drop down list under **Index** to compare these companies with the index. Click on **Go** to redraw the graph.



- 6 If you would like to see the data in more detail, you can view or download it by clicking on **View Data** or the Excel symbol next to it.