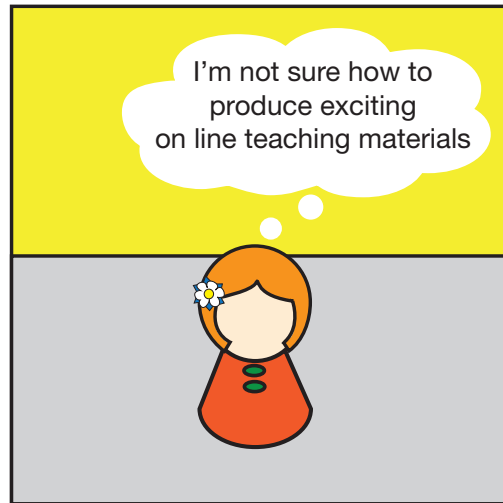
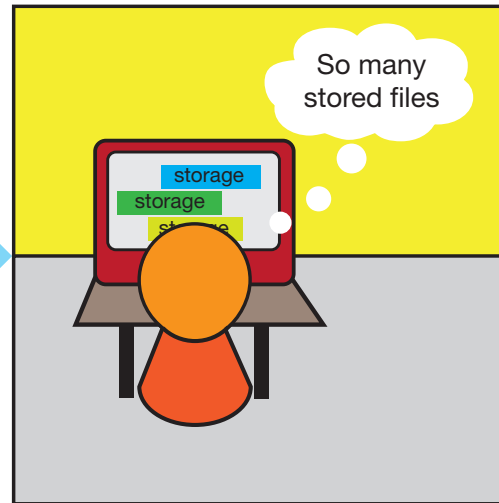


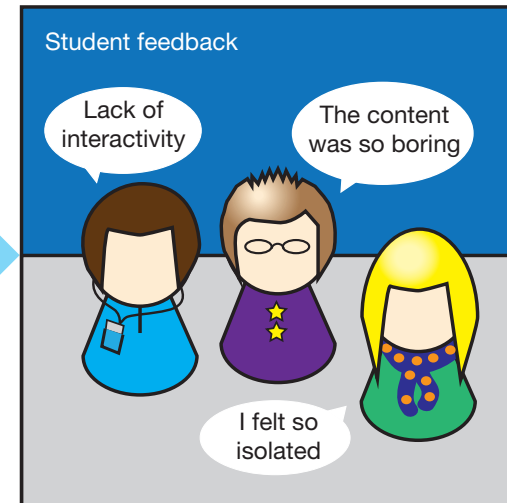
Media Workshop - What do we do Course Design Support Storyboard



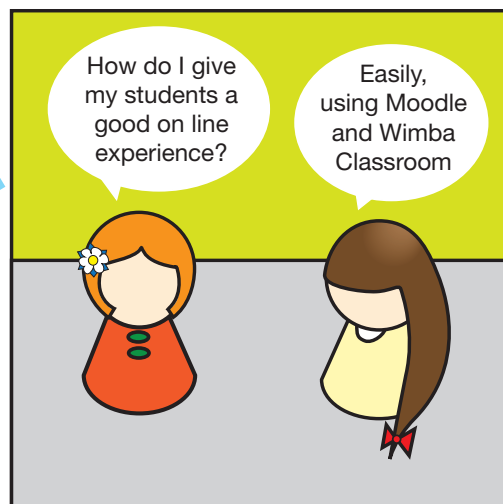
Erintrude is a lecturer in the Department of Clinical Health Care teaching on a postgraduate distance learning programme. She is new to distance learning and despite having completed the OBU PCTHE course and the Media Workshop Introduction to Moodle course she is still very unsure about how to give her students the best online learning experience possible.



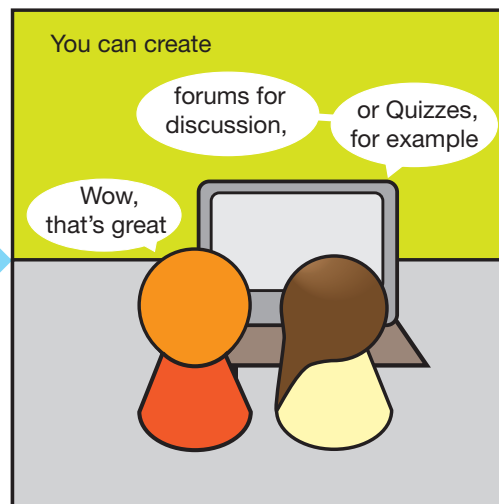
She has inherited the programme from a member of staff who only used Moodle for document storage.



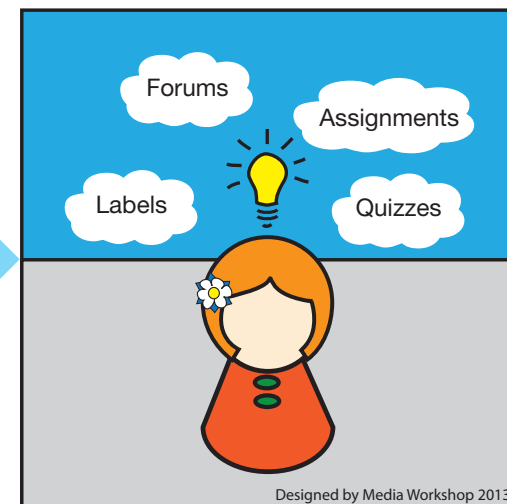
Feedback from the end of programme evaluation forms was very negative.



Erintrude is keen to improve the student learning experience and would like some advice on how best to achieve this.



Daphne Dexter from Media Workshop has arranged a meeting with Erintrude to discuss [Moodle books](#), lessons, quizzes and [Wimba Classroom](#).



Erintrude left with lots of ideas to improve the interactivity of her on line courses.