

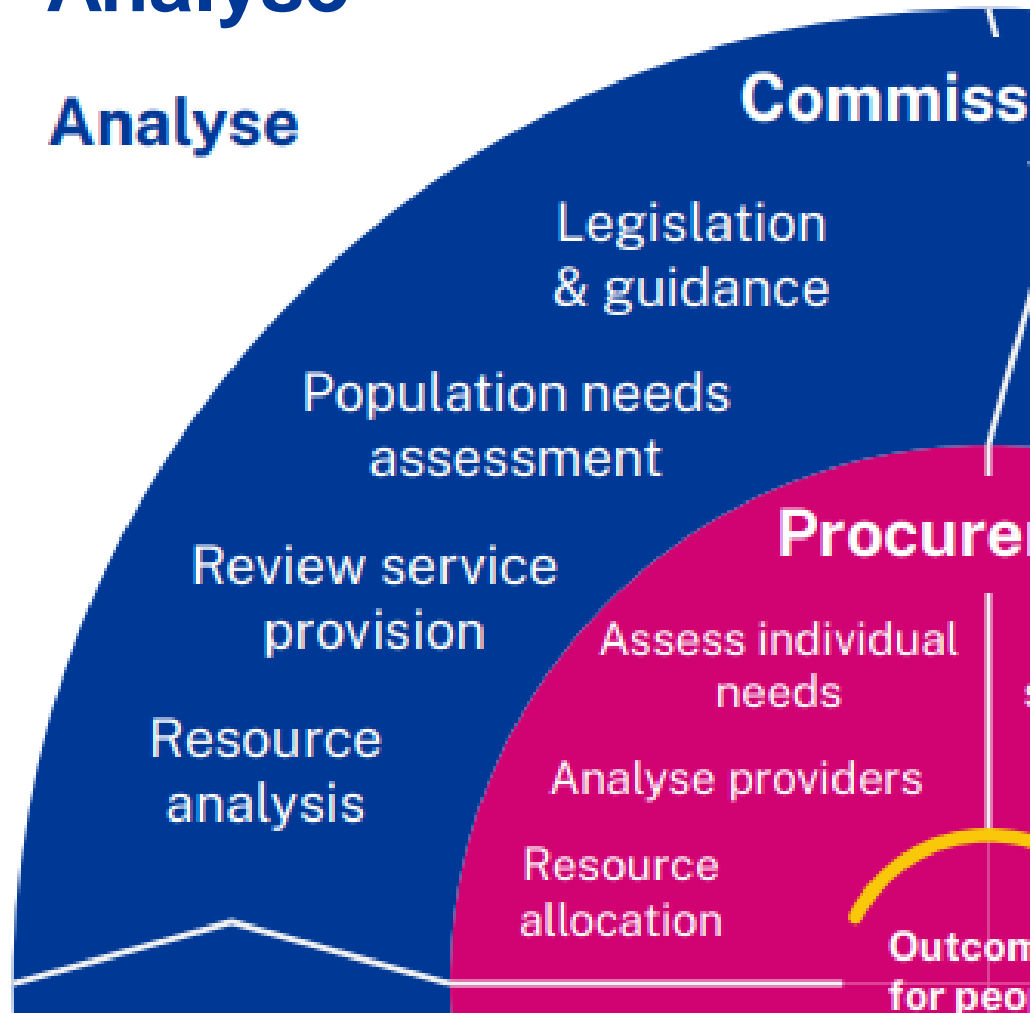
OXFORD
BROOKES
UNIVERSITY



institute of
public care

Needs and Resources Analysis

Institute of Public Care Commissioning Cycle - Analyse



What is needs analysis

| | |
|--------------|--|
| What? | A needs analysis is a way of estimating the nature and extent of the needs of a population so that services can be planned accordingly. |
| Why? | The purpose is to help focus effort and resources where they are needed most. |
| How? | A robust needs analysis provides commissioning agencies with a range of information that can feed into and inform the planning stage of the commissioning cycle. |

Needs analysis – what does it involve?

Needs analysis looking at whole populations and the needs of vulnerable groups

Understanding the legislation, research and best practice basis for services/interventions

Establishing a picture of total resources in the local area to map against priorities

Mapping and reviewing current services across agencies; in terms of range, quality and costs



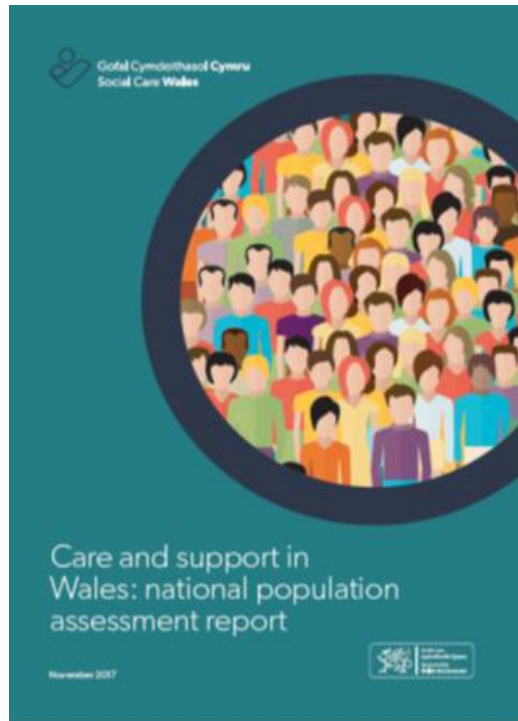
Joint Strategic Needs Assessment

“A systematic method for analysing needs of populations to inform and guide commissioning of health, wellbeing and social care services within a local authority area.”



- A statutory duty since 2007; the JSNA will underpin the health and well-being strategies and commissioning plans
- It should draw on a wide range of data sources and focus on outcomes and the future
- Statutory Guidance DH 2013 - Joint Strategic Needs Assessments and Joint Health and Wellbeing Strategies

Population Needs Assessment in Wales



All regions required to produce a Population Needs Assessment under the Social Services and Well-being (Wales) Act 2014

Data will include:

1. National Statistics such as demographic data, risk factors, prevalence and incidence data
2. Local data collected by public bodies such as GP practice or hospital performance data
3. Views of patients/service users and carers
4. Information and performance data collected by private and independent providers
5. National Research findings

Who are the population we need to identify?



Populations we know less about – the known unknowns



Slido



What population / group would you like to focus on for the next exercise?

① Start presenting to display the poll results on this slide.

Slido



What population / group would you like to focus on for the next exercise?

① Start presenting to display the poll results on this slide.

Using data intelligently

- Trends can be changed by better utilising intelligence from research, best practice and service user experience
- This can help us understand:
 - Resilience / protective factors
 - Risk factors



Who are your populations?

In groups identify who are your:

- Current user population
- Future user population
- Known unknown groups
- **Target user population**

Are there any barriers to certain groups of people and/or individuals needs within our communities being identified and what are the implications of this?

Matching resources to needs



Resource mapping – what does it involve?

```
graph TD; A[Needs analysis looking at whole populations and the needs of vulnerable groups] --> B[Understanding the legislation, research and best practice basis for services/interventions]; B --> C[Establishing a picture of total resources in the local area to map against priorities]; C --> D[Mapping and reviewing current services across agencies; in terms of range, quality and costs];
```

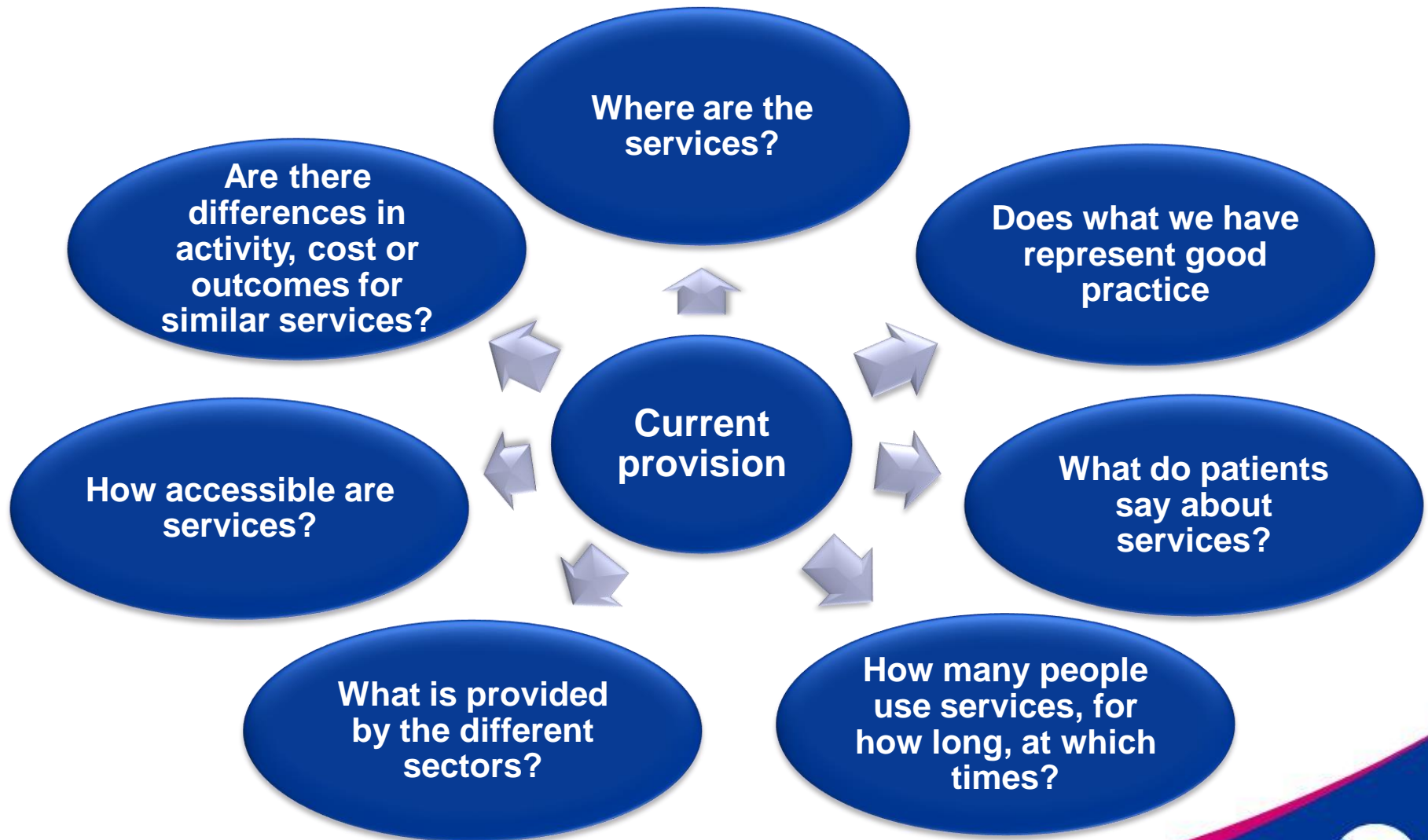
Needs analysis looking at whole populations and the needs of vulnerable groups

Understanding the legislation, research and best practice basis for services/interventions

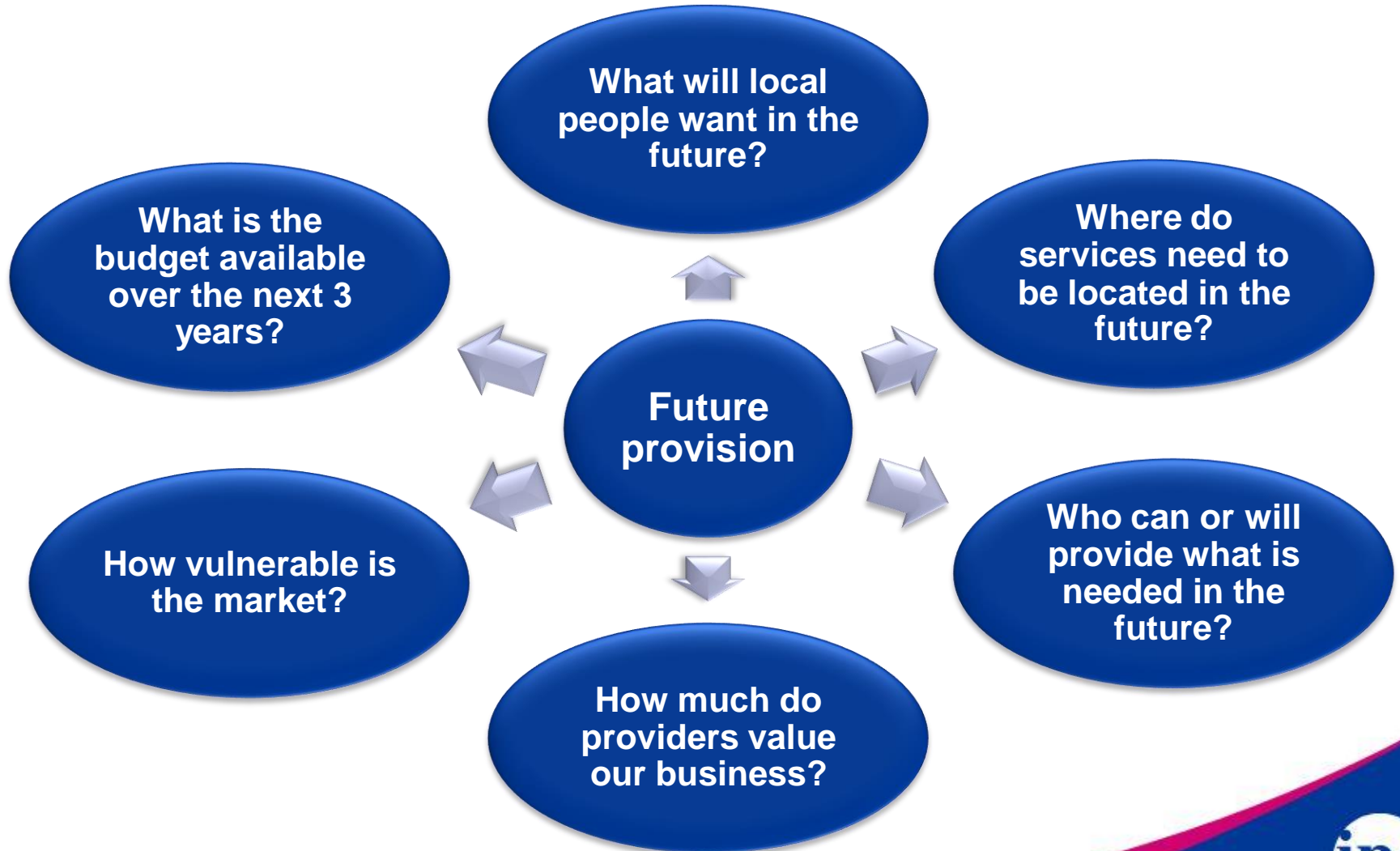
Establishing a picture of total resources in the local area to map against priorities

Mapping and reviewing current services across agencies; in terms of range, quality and costs

Do we know...

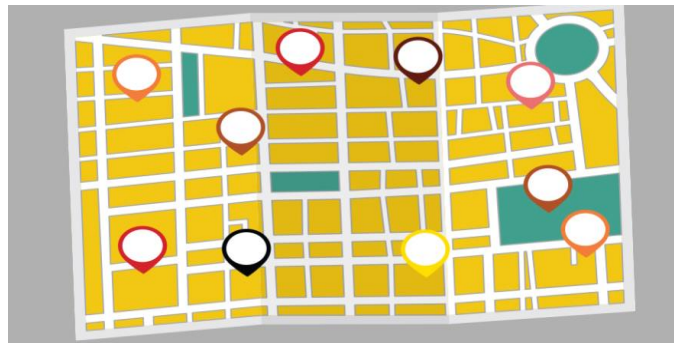


Can we find out...



Community Asset Mapping

- A process where participants make a map or inventory of the resources, skills and talents of individuals, associations and organisations.
- Discover and assemble the links between the different parts of the community, associations and agencies.
- The knowledge is used to revitalise relationships and mutual support, rebuild communities and neighbourhoods, and rediscover collective power.



The importance of asset mapping

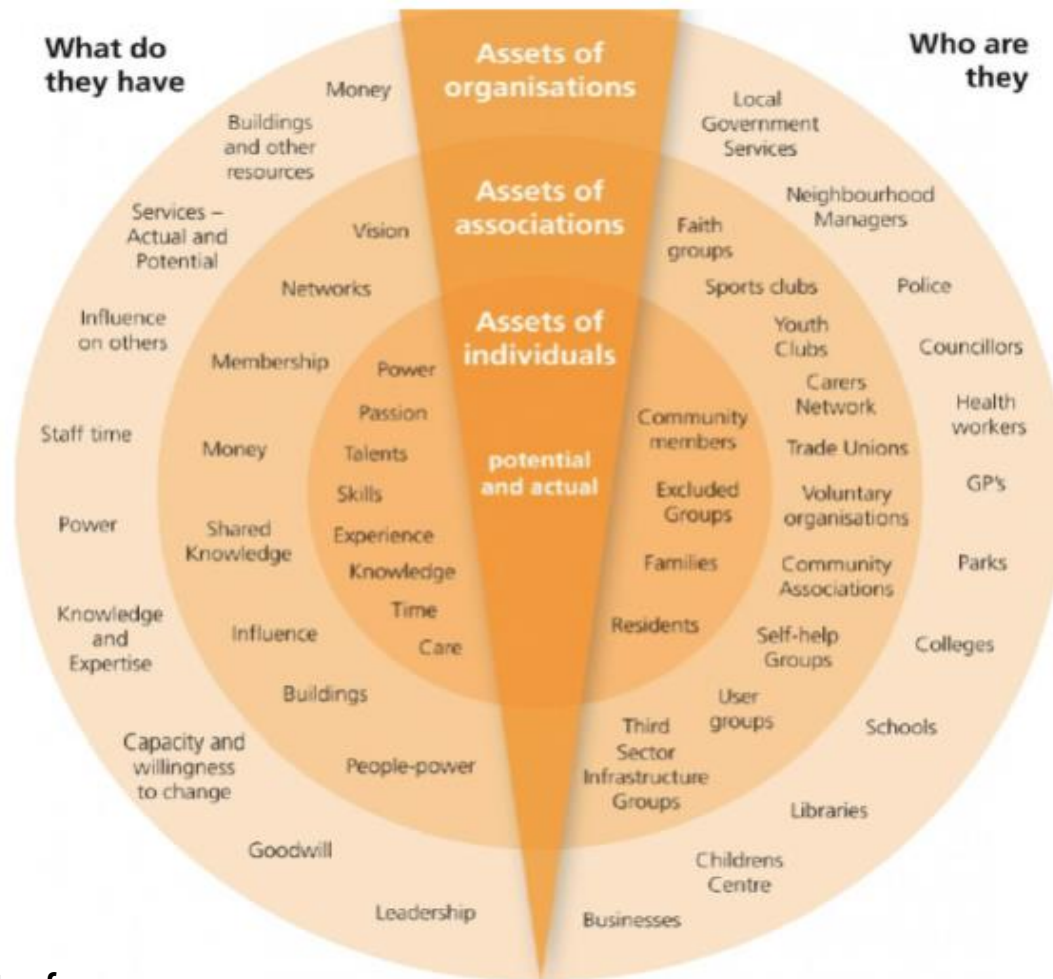
The Care Act:

- Places well-being at its heart: primary responsibility of LAs is the promotion of individual well-being of both those with care needs and carers
- Shifts responsibility from providing services to meeting needs
- Focuses on the need for services to be preventative, and stresses the importance of using existing strengths and assets of individuals and communities – an assets-based approach

The importance of local community

- A wish to better integrate care at home support with what is available from the voluntary, community and social enterprise sector including knowledge transfer, sharing of skills, experience and training opportunities.
- Steps towards more joined-up working at the local level to support the establishment and development of the 'place' aspects of health and care integration required under the Health and Care Act 2022.

As asset mapping tool



Source: Institute for
Healthcare Improvement

Assets round your target population

Use the asset mapping tool to think about addressing the needs of your target population.

How does it inform your commissioning task?

- Is it about:
 - More intervention?
 - Facilitating change?
 - Remodelling existing service provision?
 - Investing in and building community assets?

Reflections from Module 1



- What have been the main things you have heard today?
- What has struck you most about the discussions?
- What might this mean for you, your teams and organisation?
- How might you take some of this forward?

Contact us



<https://ipc.brookes.ac.uk>



ipc_courses@brookes.ac.uk



[@ipc_brookes](https://twitter.com/ipc_brookes)



01865 790312



[institute-of-public-care-brookes](https://www.linkedin.com/company/institute-of-public-care-brookes)