

**STATE-LEVEL ASSESSMENT OF THE WASTE-TO-ENERGY POTENTIAL (VIA
INCINERATION) OF MUNICIPAL SOLID WASTES IN NIGERIA**

Tosin Onabanjo Somorin*¹, Sola Adesola², Aisha Kolawole²

¹Cranfield University, Cranfield, Bedfordshire MK43 0AL, United Kingdom

²Oxford Brookes University, Wheatley, Oxford OX33 1HX, United Kingdom

1
2
3
4
5
6
7
8
9
10
11
12
13
14
15
16
17
18
19
20
21
22
23
24
25
26
27
28
29
30
31
32
33
34
35
36
37
38
39
40
41
42
43
44
45
46
47
48
49
50
51
52
53
54
55
56
57
58
59
60
61
62
63
64
65

*Corresponding Author:

Tosin Onabanjo Somorin

School of Water, Energy and Environment

Cranfield University, Cranfield, Bedfordshire, MK43 0AL United Kingdom

Email: t.o.onabanjo@cranfield.ac.uk

Abstract

1 The quest for reliable and adequate power supply in Nigeria has brought about a surge of interest in
2
3 renewable energy generation, particularly from wind, solar, hydro and biomass resources including
4
5 municipal solid waste. Waste-derived energy raises unique interest because of the magnitude of
6
7 benefits to environmental protection and socio-economic advancement. The successful operation of
8
9 Waste-to Energy (WtE) facilities in Nigeria requires continuous supply of solid waste and enabling
10
11 environment amongst other factors. This study conducted a state-level assessment of the WtE
12
13 potential of municipal solid waste (MSW) in Nigeria. Our findings show that the electricity
14
15 generation potential for the different states in Nigeria varied from 31 – 205 MW, depending on
16
17 state's waste generation capacity. The country's annual electricity generation potential from MSW
18
19 was estimated to be 26744 GWh/year, with 89% of the states having sufficient generation capacity
20
21 at minimum regulatory electricity generation requirement of 50 MW. But, based on current realities
22
23 such as poor collection efficiencies, Nigeria's exploitable WtE capacity from MSW was below
24
25 3800 GWh/year, with all the states having less than 50 MW capacity. On-site power generation
26
27 such as dedicated power station for industrial estates and corporate users can be a feasible form of
28
29 distributing energy generated from WtE facilities. The outcomes of this study are important in
30
31 informing the siting of WtE facilities in Nigeria and for enabling policy framework.
32
33
34
35
36
37
38
39
40
41
42
43
44
45
46
47
48
49
50
51
52
53
54

55 **Keywords:** Renewable Energy, Solid Waste Master Plan, Waste Energy Recovery, Sustainable
56
57
58 Policy Development, Incineration, Biomass
59
60
61
62
63
64
65

1. INTRODUCTION

Energy plays an important role in meeting the needs of residential, industrial, transport, agricultural and other sectors in an economy. Sub-Saharan Africa (SSA)'s economic growth projected at 4.2% GDP (1) qualifies the sub-region as the new frontier of growth. However, this growth could be impeded by electricity shortages (2). The power generation capacity in the entire SSA compares to Spain's 68 GW, and the average price of power in SSA is high compared to international standards (3). Demand for energy is greater than supply in SSA and this is compounded by rapid population growth and increase in the urban population density. There is low kilowatt-hour (kWh) electric power consumption in SSA. For example, the electric power consumption in Nigeria in 2012 was reported as 156 kWh per capita (4). This value is comparably low to the electric power consumption in other developing countries such as Malaysia, South Africa and Venezuela, which consumed 4114, 4405 and 3413 kWh per capita respectively. The increasing energy demand, insufficient supply of electricity, and quest for reliable and adequate power supply in Nigeria have therefore necessitated a surge of interest in alternative energy sources, particularly from solid waste.

Municipal Solid Waste (MSW) is of unique interest because of the benefits to environmental protection and socio-economic advancement. These resources are readily available in Nigeria, however, illegally dumped in open spaces and poorly managed with enormous environmental consequences. MSW, also referred to as trash or garbage, is a mix of everyday items from local residences, businesses, commercial properties and public institutions including schools and hospitals (5). It consists of degradable materials such as cardboard, paper, food scraps, newspapers, and other combustible elements. MSW also contains non-biomass derived materials such as plastics, glass, metals, appliances and batteries. Hence, the averted dump of such materials in the environment and subsequent use for heat and/or electricity, is considered renewable and the process of recovering energy from waste is referred to as Waste-to-Energy (WtE).

Waste-to-Energy includes processes such as incineration, gasification, pyrolysis that thermally treat solid waste and directly recover energy in the form of electricity and/or heat. It also includes bio-chemical processes such as landfill gas recovery, anaerobic digestion that converts the chemical energy in solid waste to yield products of high energy value e.g. methane. Thermal treatment methods with energy recovery options are widely preferred because of the possibilities to substantially reduce the quantities of waste, opportunities to recover minerals and chemicals and destroy contaminants (6), potential of directly converting the waste to an energy source, which reduces the time of treatment, as well as the potential to treat toxic materials and control emissions from point source. Their use is expected to improve the quality of life as it can minimise the adverse dumping of waste, consequently preventing environmental pollution and land degradation; minimise fossil fuel consumption and greenhouse gas emissions, offset methane that could be released from open landfills, prevent adverse health impacts from exposed burning of waste, and prevent the spread of infectious diseases via parasitic agents (7-9).

Waste-to-Energy can play a significant role in the changing energy climate in Nigeria, particularly as a renewable energy resource, as this is increasingly becoming important. By the year 2025, renewable energy is expected to account for 10% of the total energy demand projection and particularly for remote and off-grid power generation (10). As part of the strategic objectives of the National Renewable Energy and Energy Efficiency Policy (NREEEP), a legislative framework that aims at increasing the power generation capacities and the share of renewable energy sources in Nigeria, pilot projects of biomass energy conversion systems are proposed for development (11). These include the waste-to-energy plant that is proposed for Ikorodu Industrial Estate and surrounding areas in Lagos State and the 12 MW gasification facility in Imo State (12). Since Nigeria is a signatory to the Paris Agreement on Climate Change mitigation in 2015, these projects are intended to contribute to clean development mechanisms (CDMs) for the reduction of indoor and outdoor pollution, and to mitigate the effect of greenhouse gas emissions on climate change. The sustainability of such projects however, requires sufficient quantity and quality of solid waste, the right choice and scale of energy conversion technology, minimum investment risk and optimum financial returns, and a supportive legal framework. The power industry in Nigeria is replete with low planning tendencies, improper estimations and insufficient capacities such as the installation of industrial gas turbine power plants across the country without proper planning of fuel

40 delivery (13). There is also the challenge of transmission and distribution of generated electricity to the end-consumer with cost recovery.
41 As such, there are on-going discussions on how biomass power plants can connect to the transmission networks of the national grid and the
42 potential for a minimum generation requirement for large power plants to ensure and improve grid stability. Communities with multiple
43 biomass power plants under competing conditions for MSW would require a certainty of continuous supply of waste resources across
44 seasons, space and time; hence, the need to assess the WtE potential at state-level and across Nigeria.

45 Certain studies have carried out a community-level assessment of the WtE potential that could be derived from MSW for selected states in
46 Nigeria including Lagos (14), Bauchi (15), Ogun (16) and Taraba (17). McIlveen-Wright et al. (18) quantified the waste tonnage and
47 components of a typical landfill site in Lagos State. They calculated the electricity potential using fuel's caloric value, moisture content and
48 inert content. The authors further analysed the economic feasibility of a 50 MW Energy from waste coal power plant, assuming a tipping
49 fee of £50/tonne of waste and supported by other environmental and waste management options such as recycling and composting.
50 Udoakah and Akpan (19) estimated the electric potential from MSW using a proposed incineration plant in Southern Nigeria. Furthermore,
51 Amoo et al. (20) carried out a techno-economic assessment for seven states in Nigeria under different energy technologies along with
52 estimation of the electrical power and thermal energy potential generated per kg of MSW. Despite the previous work on WtE in Nigeria,
53 none of them have conducted a holistic assessment of the WtE capacity in the entire country, considering factors such as waste quality,
54 quantities and energy conversion technologies. There is no information in the literature whether there are sufficient waste quantities across
1
2
3
4
5
6
7
8
9
10
11
12
13
14
15
16
17
18
19
20
21
22
23
24
25
26
27
28
29
30
31
32
33
34
35
36
37
38
39
40
41
42
43
44
45
46
47
48
49
50
51
52
53
54
55
56
57
58
59
60
61
62
63
64
65
66
67
68
69
70
71
72
73
74
75
76
77
78
79
80
81
82
83
84
85
86
87
88
89
90
91
92
93
94
95
96
97
98
99
100
101
102
103
104
105
106
107
108
109
110
111
112
113
114
115
116
117
118
119
120
121
122
123
124
125
126
127
128
129
130
131
132
133
134
135
136
137
138
139
140
141
142
143
144
145
146
147
148
149
150
151
152
153
154
155
156
157
158
159
160
161
162
163
164
165
166
167
168
169
170
171
172
173
174
175
176
177
178
179
180
181
182
183
184
185
186
187
188
189
190
191
192
193
194
195
196
197
198
199
200
201
202
203
204
205
206
207
208
209
210
211
212
213
214
215
216
217
218
219
220
221
222
223
224
225
226
227
228
229
230
231
232
233
234
235
236
237
238
239
240
241
242
243
244
245
246
247
248
249
250
251
252
253
254
255
256
257
258
259
260
261
262
263
264
265
266
267
268
269
270
271
272
273
274
275
276
277
278
279
280
281
282
283
284
285
286
287
288
289
290
291
292
293
294
295
296
297
298
299
300
301
302
303
304
305
306
307
308
309
310
311
312
313
314
315
316
317
318
319
320
321
322
323
324
325
326
327
328
329
330
331
332
333
334
335
336
337
338
339
340
341
342
343
344
345
346
347
348
349
350
351
352
353
354
355
356
357
358
359
360
361
362
363
364
365
366
367
368
369
370
371
372
373
374
375
376
377
378
379
380
381
382
383
384
385
386
387
388
389
390
391
392
393
394
395
396
397
398
399
400
401
402
403
404
405
406
407
408
409
410
411
412
413
414
415
416
417
418
419
420
421
422
423
424
425
426
427
428
429
430
431
432
433
434
435
436
437
438
439
440
441
442
443
444
445
446
447
448
449
450
451
452
453
454
455
456
457
458
459
460
461
462
463
464
465
466
467
468
469
470
471
472
473
474
475
476
477
478
479
480
481
482
483
484
485
486
487
488
489
490
491
492
493
494
495
496
497
498
499
500
501
502
503
504
505
506
507
508
509
510
511
512
513
514
515
516
517
518
519
520
521
522
523
524
525
526
527
528
529
530
531
532
533
534
535
536
537
538
539
540
541
542
543
544
545
546
547
548
549
550
551
552
553
554
555
556
557
558
559
560
561
562
563
564
565
566
567
568
569
570
571
572
573
574
575
576
577
578
579
580
581
582
583
584
585
586
587
588
589
590
591
592
593
594
595
596
597
598
599
600
601
602
603
604
605
606
607
608
609
610
611
612
613
614
615
616
617
618
619
620
621
622
623
624
625
626
627
628
629
630
631
632
633
634
635
636
637
638
639
640
641
642
643
644
645
646
647
648
649
650
651
652
653
654
655
656
657
658
659
660
661
662
663
664
665
666
667
668
669
670
671
672
673
674
675
676
677
678
679
680
681
682
683
684
685
686
687
688
689
690
691
692
693
694
695
696
697
698
699
700
701
702
703
704
705
706
707
708
709
710
711
712
713
714
715
716
717
718
719
720
721
722
723
724
725
726
727
728
729
730
731
732
733
734
735
736
737
738
739
740
741
742
743
744
745
746
747
748
749
750
751
752
753
754
755
756
757
758
759
760
761
762
763
764
765
766
767
768
769
770
771
772
773
774
775
776
777
778
779
780
781
782
783
784
785
786
787
788
789
790
791
792
793
794
795
796
797
798
799
800
801
802
803
804
805
806
807
808
809
810
811
812
813
814
815
816
817
818
819
820
821
822
823
824
825
826
827
828
829
830
831
832
833
834
835
836
837
838
839
840
841
842
843
844
845
846
847
848
849
850
851
852
853
854
855
856
857
858
859
860
861
862
863
864
865
866
867
868
869
870
871
872
873
874
875
876
877
878
879
880
881
882
883
884
885
886
887
888
889
890
891
892
893
894
895
896
897
898
899
900
901
902
903
904
905
906
907
908
909
910
911
912
913
914
915
916
917
918
919
920
921
922
923
924
925
926
927
928
929
930
931
932
933
934
935
936
937
938
939
940
941
942
943
944
945
946
947
948
949
950
951
952
953
954
955
956
957
958
959
960
961
962
963
964
965
966
967
968
969
970
971
972
973
974
975
976
977
978
979
980
981
982
983
984
985
986
987
988
989
990
991
992
993
994
995
996
997
998
999
1000

55 the country to inform the siting of future WtE facilities, especially under minimum electricity generation requirement.
56 This study therefore presents a state-level assessment of the WtE potential in Nigeria. The outcomes are compared to the exploitable WtE
57 for the different states at various MSW generation rates and collection efficiencies, and considering a minimum electricity generation
58 requirement of 50-100 MW for connecting to the national grid. The overall exploitable WtE of the country are presented in broad scales for
59 different waste conversion technologies using net plant efficiencies, MSW generation rates and waste collection efficiencies. Sensitivity
60 analysis was conducted using various waste quantities and fuel composition to highlight the influence of these parameters on net plant
61 efficiency. The study concludes by proposing ways to enhance the deployment of WtE facilities in Nigeria, as this can inform the
62 development of appropriate policy framework.

2. METHODS

64 The study exploited the MSW generation capacities of the 36 states in Nigeria and the Federal Capital Territory (FCT), according to
65 population size. The average population size as reported by the National Population Commission for all the states in Nigeria and the FCT
66 (21) was adjusted for the period of 2007-2013 using the population growth rate factors in Table 1 and assuming the same growth rate factor
67 for year 2014-2015, as year 2013. The growth rate factors were calculated from the World Development Indicators (22) for birth and death
68 rates using Eqn. 1. These were expressed as percentage per year and used to determine the state and country's mean population at study
69 year 2015.

70 **Table 1: Growth Rate Factors and Adjusted Population Size/Year**

71 Growth Rate Factor, GRF (%/year) = [(birth rate– death rate), crude (per 1,000 people)]/1000 (Eqn. 1)

72 Mean Population (μ) = $\mu_0 (1 + GRF)$ (Eqn. 2)

73 A state level assessment of the exploitable WtE in Nigeria was carried out at different MSW generation capacities rates of 0.30-0.80
74 kg/cap/day and waste collection efficiencies of 30-80%, assuming incineration as the preferred thermal treatment technology for the MSW.

76 **2.1. Model description**

77 The waste conversion and energy recovery processes were simulated in Aspen Plus® environment, as depicted in Figure 1 using a non-
78 stoichiometric thermodynamic equilibrium model that minimises the Gibbs free energy in the system.

79 Figure 1: Schematic flow diagram of the waste conversion and energy recovery processes of the MSW

80 The main processes include the combustion of the MSW in a conventional incinerator, exhaust gas clean up, heat recovery via a heat
81 recovery steam generator (HRSG) and electricity generation with a steam turbine. Figure 1 models the introduction of the moist MSW into
82 a DRIER that is coupled to a flash separator (DRY-FLASH) to remove the moisture from the biomass stream. The MSW was defined as a
83 non-conventional stream using proximate and ultimate compositions as well as the lower heating value (LHV) of the fuel. The exit fuel (dry
84 MSW) was introduced into a yield-based reactor (DECOMPSR) where the fuel is broken down to its elemental constituents. The heat
85 produced from the decomposed fuel and the elemental constituents of the dry fuel were introduced into a RGIBBS reactor (PRI-COMB).
86 This reactor minimizes the Gibbs free energy at defined temperature and pressure under constraints of elemental balance, without
87 requirements for reactor design and reaction stoichiometry, that is typically a balance between the amounts of reactants and products. Air
88 stream was introduced into the PRI-COMB block at standard temperature and pressure to maintain combustion and this was defined in
89 Aspen Plus® as a conventional mixed stream.

1
2 90 The combustion gas products that exit the PRI-COMB were separated into solids and gas streams using a SSPLIT block (SEPARATR).
3
4
5 91 The heat from the gas stream was recovered through the HRSG block that is connected to a steam boiler. The steam generated from the
6
7 92 boiler flowed to the steam turbine where work was produced while the residual heat in the exhaust gas was removed via heat exchange in
8
9
10 93 the block (CONDNSR). The cooling water required for heat exchange from the hot flue gases and to produce steam was supplied by a
11
12 94 PUMP block. The air supply rate and cooling water flow rate were calculated using calculator and design spec blocks. A steady state
13
14 95 simulation was achieved, assuming ideal gas behaviour for all gases including air (21 vol. % oxygen and 79 vol. % nitrogen). The boiler,
15
16
17 96 steam and overall efficiencies, and the exploitable WtE were derived using Eqn. 3-6. This Exploitable WtE is all denoted as MW, that is
18
19 97 MWh per hour of operating the plant, except otherwise stated.

20
21
22 98
$$\eta_{\text{Boiler}} = \frac{Q_{\text{Boiler}}}{\text{HHV}_{\text{Biomass}} \times \text{Fuel Burn Rate}} \quad \text{Eqn. 3}$$

23
24
25
26 99
$$\eta_{\text{thermal}} = \frac{W_{\text{Turbine}} - W_{\text{Pump}}}{Q_{\text{Boiler}}} \quad \text{Eqn. 4}$$

27
28
29
30 100
$$\eta_{\text{overall}} = \eta_{\text{thermal}} \times \eta_{\text{Boiler}} \quad \text{Eqn. 5}$$

31
32
33 101
$$\text{Exploitable WtE (MW)} = (W_{\text{Turbine}} - W_{\text{Pump}}) \cdot \eta_{\text{wce}} \quad \text{Eqn. 6}$$

34
35
36 102 where η_{Boiler} - efficiency of the boiler (%); Q_{Boiler} - heat recovered from the flue gas (MJ/s); $\text{HHV}_{\text{Biomass}}$ - higher heating value of the
37
38 103 biomass (MJ/kg); W_{Turbine} - work output of the turbine (MW); W_{Pump} - work done by the pump (MW); η_{overall} - overall thermal efficiency
39
40
41 104 (%); η_{thermal} - thermal efficiency of the heat recovery section (%); η_{wce} - waste collection efficiency (%).

42
43
44 105 The input parameters as listed in Aspen Plus® environment are listed in Table 2 while the ultimate and proximate compositions of the
45
46
47 106 MSW as inputted in the model are listed in Table 3.

48
49
50 107 **Table 2: Input Parameters in Aspen Plus® for the Base-case Scenario**

51
52
53 108 **Table 3: The ultimate and proximate compositions of a typical MSW in Nigeria (Amber et al. 2012)**

54
55
56 109 The average amount of waste generated at the state level was deduced from the average MSW generation capacities and the adjusted
57
58
59 110 population size using Eqn. 7.

111 Tonnage/day = [state mean population x average MSW generation rate (kg/cap/day)]/1000 Eqn. 7

112 The analysis considered waste treatment rate of 50 tonnes per hour, equivalent to 1200 tonnes per day and obtained net plant efficiency of
113 26%, a value that is within the range of 17-27% (20-21). This analysis presents a point estimate performance of the WtE facility based on
114 the defined boundaries in this study. Other energy conversion technologies are considered using varying net plant efficiencies in the range
115 of 17-67%. To account for fuel variabilities, sensitivity analysis was conducted with wastes of varying composition and quantities and the
116 results are presented in Section 3.3.

117 3. RESULTS & DISCUSSION

118 3.1. State-level Assessment of Electricity Generation Potential from MSW in Nigeria

119 Nigeria is classified as a low-income country with average MSW generation rate of 0.49-0.56 kg MSW/cap/day (23-25). The country is
120 however projected to produce about 100,000 tonnes of MSW/day at urban waste generation rate of 0.80 kg MSW/cap/day (23) by 2025. As
121 such, Table 4 shows that the electricity generation potential per hour of operating the WtE incineration facilities in different states in
122 Nigeria can vary from 31 - 205 MW at 0.53 kg/cap/day. At projected MSW generation rate of 0.80 kg/cap/day, the electricity generation
123 potential for the individual states can vary from 47 - 312 MW. These results sum up the country's electricity generation potential to be
124 26744 GWh/year (0.53 kg/cap/day) and 40753 GWh/year (0.80 kg/cap/day), corresponding to 0.78 MWh/tonne of MSW. World Bank (26)
125 reported that 0.68 MWh of electricity can be recovered per tonne of incinerated waste. Amber et al. (27) estimated a WtE potential of 0.70
126 MWh/tonne MSW and Amoo et al. (20) reported a range of 0.75 - 1.59 MWh/tonne MSW for electricity generated via incineration and for
127 the entire waste generated. Thus, the values reported in Table 4 agree with those reported in literature. However, it is unknown if the
128 quantity of waste available is sufficient to power large WtE facilities that can connect to the national grid under a minimum regulatory
129 electricity generation requirement. Assuming a minimum generation requirement of 50 MW is imposed, the results in Table 4 show that 33
130 states have sufficient generation capacity to connect to the grid at 0.53 kg/cap/day; but only 7 states can meet a higher minimum generation
131 requirement of 100 MW. At projected waste generation rate (0.80 kg/cap/day), all the states, except the FCT, will meet the 50 MW
132 requirement while 26 states can satisfy 100 MW minimum generation requirement. The states with the highest electricity generation
133 potential are Kano, Lagos and Kaduna while Nasarawa, Bayelsa and FCT had the lowest potential.

134 **Table 4: Electricity Generation Potential at MSW generation rate of 0.53 and 0.80 kg/cap/day**

135 The MSW generation rates used in Table 4 are based on a nationwide average. However, generation capacities vary within and between
136 countries, regions and cities, and between urban and rural communities. In Ogwueleka (28), MSW generation rates varied between 0.44 and
137 0.66 kg/cap/day in urban cities. Nnaji (29) showed that MSW generation rate can vary widely within and between states from 0.13 to 0.71
138 kg/cap/day. Some of the low waste generating states, according to Nnaji (29), include Oyo, Borno, Delta, Kaduna, and Kano State with
139 values of 0.13, 0.25, 0.29, 0.30, and 0.31 kg/cap/day respectively, and such capacities are typical of rural communities. Rivers, Lagos and
140 Ogun states generated high amount of waste with average waste generation capacities of 0.60, 0.63 and 0.66 kg/cap/day respectively, (29).
141 These high waste generation states are within the estimated range of 0.6 - 1.0 kg/cap/day for low-income countries. The report on Oyo state
142 was conflicting as it was regarded as both high- and low- waste generating state (29). The differences in waste generation capacities for
143 different states are attributed to seasonal variations and economic activities including urbanisation and industrialisation that triggers the
144 consumption of more goods and services, as well as socio-cultural factors. Urban communities are known to generate high amount of
145 waste with non-organic fractions, while rural communities produce a high amount of organic waste, but a relative small quantity of
146 inorganic waste (27). Hence, the use of a nationwide average of MSW generation rate for estimating the WtE potential in Nigeria is an
147 ideal, which may be impracticable under current waste management realities.

148 The results also assume that all the waste generated at households and commercial properties reaches the MSW treatment facilities;
149 however, there are several limiting factors hindering the successful transportation of waste in Nigeria. Some of the known factors include
150 poor road conditions, waste management practices, vehicle maintenance, transportation networks and infrastructures (30-31). Open
151 dumping of solid wastes in illegal sites and scavenging, an informal activity that involves the picking of waste streams for valuable items
152 and for economic reasons are also well mentioned as frequent practices (28; 32). Studies by Ogwueleka (33) and Emelumadu et al. (34)
153 have indicated that the collection efficiency in Nigeria is poor, at best 60% efficiency for established waste management agencies. Anestina
154 et al. (35) reported a collection efficiency between 14% and 88% by private partnership operators for various frequency rates. Hoornweg et
155 al. (23) estimated the collection efficiency of MSW in Nigeria to be about 41%. Thus, the reported tonnage of waste in landfills is only a
156 fraction of the waste generated.

157 Additionally, there are indications that the average MSW generation per capita largely reported in literature are not true estimates. Nnaji
158 (29) showed that there is a high disparity in the data reported for the average MSW generation rate, even for the same city and state in
159 Nigeria. Two instances of under- and over-estimation of the average MSW generation rate were cited in Bauchi and Kano State. Lawal and
160 Garba (15) predicted a value of 0.31 kg/cap/day in Bauchi state, while Audu et al. (36) predicted a value of 0.86 kg/cap/day for the same
161 state. Bichi et al. (25) estimated a value of 0.30 kg/cap/day for Kano state while Oumarou (37) stated 0.81 kg/cap/day for the same city.
162 There was no distinct correlation between the rate of generation of MSW and factors common among the cities evaluated. The disparities
1 were attributed to scope and methodological differences, poor sampling and test designs, and low quality of data sources due to the use of
2 163 semi-structured interviews and questionnaire to waste management agency workers and informal waste collectors with little or no data
3 164 validation and quality checks. Thus, the true measure of waste generation capacities for different cities, states and for the country's overall
4 165 is yet unknown. A point estimate of the WtE potential based on the reported waste generation capacities in literature or an underlying
5 166 assumption that all the waste generated at household, and commercial levels reaches the landfill does not provide a realistic data set for the
6 167 exploitable energy potential in Nigeria, which limits the use of these studies for practical scenarios. To this end, a state-level assessment of
7 168 the exploitable electricity generation potential in Nigeria was carried out at varying MSW generation capacities (0.30-0.80 kg/cap/day) and
8 169 collection efficiencies (30-80%), retaining incineration as the preferred choice of thermal treatment. The word 'exploitable' was used
9 170 because the deductions were based on waste that was collected and utilised, not just the amount that is generated.
10 171

172 **3.2. State-level Assessment of Exploitable Electricity Generation Potential**

173 Figure 2 provides the contour plot of the exploitable electricity generation potential for each state in Nigeria, as a function of average waste
174 collection efficiency (WCE) and generation rates. At MSW generation rate of 0.30 kg/cap/day and WCE of 30-50%, all the states had
175 electricity generation potential of less than 50 MW and at 60-80% WCE, only two of the states (Kano and Lagos) had up to 50 MW. At
176 high MSW generation rate of 0.80 kg/cap/day, 2-15 states had up to 50 MW at WCE of 30-50% but more than 26 states had 50 MW at
177 WCE of 60-80%. Thus, the country's exploitable electricity generation potential from MSW is estimated to vary between 3768 - 26082
178 GWh/year, assuming a plant capacity factor of 80%. This means that MSW generation rate of ≥ 0.60 kg/cap/day and WCE $\geq 70\%$ would be
179 required for at least half of the states to own a WtE facility that can connect to the national grid. These results show that there is a wide
180 variation in the exploitable electricity generation potential from MSW across the different states in Nigeria and from those presented in
181 Section 3.1. There is therefore the need for proper feasibility assessment of waste generation rates within and between states before siting a
182 WtE facility, because if a WtE facility is sited in a location without easy access to MSW, the facility may run at suboptimal capacity and
183 this could have severe economic consequences. The contour plot in Figure 2 provides a broad range of exploitable WtE scales that can
184 inform siting of WtE facilities for the different states. The plot can be used for identifying the minimum operating WCE that is required to
185 achieve an intended WtE capacity. This can be applied after in-depth pre-feasibility study of the waste generation rates across seasons.

186 Figure 2: The annual exploitable WtE in Nigeria for different energy conversion technologies, WCE (30-80%) and MSW generation rates
187 (0.30-0.80 kg/cap/day)

188 The energy recovered from MSW can be a major contribution to electricity supply in Nigeria. According to the Nigerian Electricity Supply
189 Industry (38), the installed electricity generation from gas and hydro-electric power plants in Nigeria was 12522 MW in 2015, but the
190 available capacity was 7141 MW due to maintenance and repair constraints. Insufficient gas and water supply, reduced transmission
191 capacities and demand imbalances reduced the available capacity further to 3879 MW in 2015. Based on a report by the Nigerian Energy
192 Support Programme (NESP, 2014), electricity demand was estimated as 8664 - 12800 MW in 2014, but predictions by various authors and
193 projected growth rates suggest the increase in electricity demand to 28261 - 88698 MW by 2020. To meet current and projected energy
194 demands, the Energy Commission of Nigeria expect the contributions from renewable energy sources to be 14970 MW (Solar), 47 MW,
195 12132 MW (large-hydro), 1660 MW (small-hydro) and 65 MW (dedicated biomass crops) with an indicative annual electricity
196 consumption of 99590 GWh in 2025. The projected energy inputs from conventional energy sources for the same period are estimated as
197 120513 MW (gas), 14011 MW (coal) and 7199 MW (nuclear). Thus, comparing the exploitable electricity generation potential in Figure 2
198 to the electricity generation capacities and supply in Nigeria, it can be deduced that potential energy recovery from MSW via incineration
199 amounts to 11 - 77% of the current operational capacity, and 6 - 42% of the available electricity generation capacity of the electricity supply
200 industry. Considering exploitable electricity generation potential at MSW of 0.80 kg/cap/day at WCE of 30-80%, projected WtE potential
1201 can provide up to 10% of the projected renewable energy supply, 0.7 - 1.7% of the total projected energy supply in 2025, and meet 9.8 -
2
3
4
5
6
7
8
9
10
11
12
13
14
15
16
17
18
19
20
21
22
23
24
25
26
27
28
29
30
31
32
33
34
35
36
37
38
39
40
41
42
43
44
45
46
47
48
49
50
51
52
53
54
55
56
57
58
59
60
61
62
63
64
65

203 The cumulative energy potential from large-, small-, and micro- hydropower plants in Nigeria is estimated at 12220 MW (39), and 1900
204 MW of large hydropower is currently being exploited. More recently, Akuru et al. (40) estimated that the exploitable energy from
205 hydropower stations will be 36000 GWh/year, which is one-third fraction of the value reported by Mohammed et al. (39). Seasonal
206 variations, high investment costs, flooding, dam collapse and drought are listed as some of the drawbacks of hydropower in Nigeria (41).
207 For solar energy, the country is well located just below the equator; hence solar energy is well distributed across the country. The energy
208 potential is said to vary from 4 kWh/m²/day in the southern states to 6.5 kWh/m²/day in the northern states (NESP, 2014), but large-scale
209 generation is yet to be implemented. Regarding wind energy, the energy potential in Nigeria is estimated at 50046 MWh/year at medium
210 generation capacity of 5 MW/km² 25 m height and 30% capacity factor across 22 selected states (42), although Mohammed et al. (39)
211 reported a higher range of 120-790 MW at mean wind speed of 1.6-4.4 m/s and height of 10-25 m. Brimmo et al. (43) reported higher wind
212 speeds of up to 7.8 m/s in Kano and Katsina states in Northern Nigeria. The estimated energy potentials are however not indicative of large-
213 scale national projects. The contributions from 10 major agricultural crop residues is estimated to be 1958 PJ/year (44), with no further
214 indication on their energy conversion. As such, the energy from MSW can be a significant contribution to Nigeria's energy supply.

215 A comparison of the results in this study with other African countries as provided by Scarlat et al. (45) shows that Nigeria ranks with South
216 Africa and Egypt as one of the countries with the highest WtE potential based on waste generation rates. The total energy potential for
217 African countries was estimated as 1125 PJ/year (incineration) and 182 PJ/year (landfill) in 2012 and projected to be 2199 PJ/year
218 (incineration) and 530 PJ/year (landfill) in 2025. Nigeria was estimated to have a WtE potential of 157 PJ/year at 30% electricity
219 conversion efficiency, corresponding to 43611 GWh in 2012. This value can account for ~14% of Africa's WtE potential and is similar to
220 those reported in this study. Based on the waste collected, the total energy potential for Africa was deduced as 612 PJ/year (incineration)
221 and 323 PJ/year (landfill) in Scarlat et al. (45), implying an average WCE of 54.5% for Africa. The WtE potential for Nigeria was estimated
222 as 65 PJ/year, corresponding to 18055 GWh/year, based on MSW generation rate of 0.53 kg/cap/day and 40% WCE. This low WtE
223 potential ranks Nigeria with Sudan, Congo and Cameroon, values that are within the range reported in this study. Further comparison with
224 other countries is not straightforward, due to differences in macroeconomic variables. For instance, Ouda et al. (46) investigated WtE
225 potential for three main cities in Saudi Arabia and stated that the electricity potential via incineration was 671 MW at MSW recovery rate

226 of 1.4 kg/cap/day. In Malaysia, an upper middle income country with an average MSW rate of 0.80 kg/cap/day, it was estimated that 2400
227 GWh of electricity could have been produced from waste in 2014, if appropriate technology were employed, and this is projected to
228 increase to 2650 GWh by 2020 (47). Islam (48) showed that in Dhaka and Chittagong cities of Bangladesh, an estimated amount of 1444
229 and 1394 GWh of electricity can be produced via incineration by 2050, due to increase in waste generation trend. There is however no clear
230 basis for comparison, due to varying population, level of industrialisation and socio-economic activities.

231 3.2.1. Choice of Waste Conversion Technology

232 There are proven conventional combustion systems, as well as new and emerging technologies that could be used for treating MSW
233 thermally with options for energy recovery. The conventional systems include grate-fired incineration, fluidized bed incineration, modular
234 two-stage incineration and batch waste combustion systems (49-50). The grate-fired incineration requires minimal pre-processing of waste
235 and allows the treatment of waste *en masse*, thus referred as mass burn facilities. Typical grate-fired incineration involves the discharge of
236 waste directly from the consumer into a pit or bunker at the waste site, subsequent transfer of waste via an overhead crane into a feed
237 hopper and then a final transfer to a moving grate, where combustion process is initiated (51). Reactions include the initial reduction of
238 moisture, degassing, primary oxidation of readily combustible elements under limited oxygen conditions and subsequent combustion of
239 fixed carbon, to yield product gas (mainly composed of carbon dioxide), heat and inert ash. Energy could be recovered as heat or electricity
240 and efficiencies of such systems are in the range of 14-27% (electricity), and up to 60% (heat plus electricity), while their capacities range
241 from 40 - 400 MT per year, depending on fuel characteristics (26). The fluidized systems are similar to mass burn incineration; however,
242 requires pre-processing such as sorting, shredding, and separation of materials. Thus, homogenous fuel is required to be fed into the
243 combustor chamber, a bed of inert material on a grate with inflow of oxidant. The batch waste incinerator processes smaller amount of
244 waste, at most 3 tonnes per batch and are not typically used for energy recovery, except retrofitted for this purpose. The advance thermal
245 treatment facilities include pyrolysis and gasification technologies. These systems are less proven on a commercial scale, less adaptable to
246 heterogeneous and fluctuating waste streams and employs more complex processes and controls than the incineration systems (53-54).

247 This study has demonstrated the use of mass burn incineration as the most applicable WtE facility for the waste management landscape in
248 Nigeria, as it requires minimal waste pre-treatment requirement such as waste prevention, re-use, recycling and composting. It is also a
249 proven technology and allows the combustion of the MSW (as received basis) at temperatures above 800°C and under excess air conditions
250 and can be operated with or without heat recovery (26); hence enabling a modular operation for countries with less maintenance
251 capabilities. They are also preferred in countries with large quantities of waste as it ensures the reduction of 75-90% of the MSW (55). The
252 disadvantage of this technology; however, includes low overall efficiency compared to recent technologies such as pyrolysis, gasification
253 with plant efficiency >40% for electricity generation and combined heat and power (CHP) plant that can ensure 66-78% efficiency (56).
254 Because of the high temperatures reached in incinerating plants which is >800°C, dioxins and other toxic emissions can be produced (57);
255 hence, flue gas treatment is a major requirement to ensure environmental standards. The ash that is also produced requires a safe form of
256 disposal in landfills so it does not ensure 100% conversion of the fuel. More so, if waste segregation becomes properly established in the
257 country, the use of alternative technologies such as anaerobic digestion could replace incineration, since waste composition in developing
258 countries is largely organic (58). The most striking disadvantage, particularly for developing countries is the high cost of maintenance,
259 repair, and technical expertise required for this technology. These disadvantages are however not out of place when compared to other
260 recent technologies such as gasification, pyrolysis and various modifications that are complex designs and requires high level of technical
261 operation and the use of homogenised, pre-treated form of waste such as shredding, drying to an acceptable limit and thorough mixing of
262 the MSW. More so, the deployment of CHP plant will require the establishment of heat utilising industries. Thus, mass burn incineration is
263 proposed for early development of WtE facilities in Nigeria, particularly for states with low WCE and recycling priorities. This
264 recommendation does not undermine the importance and prospects of modern technologies.

265 The exploitable electricity generation potential for various energy conversion technologies are presented in Figure 3 as contour plots as a
266 function of MSW generation rates and WCE. This is to highlight the opportunities with modern technologies such as gasification, pyrolysis
267 and CHP, that have higher net plant efficiencies, > 40%. While the annual exploitable WtE of the country was within the range of 3769 -
268 26082 GWh/year for incineration based technologies (net plant efficiencies of 26%), Figure 3 shows that these values can range from 6378
269 - 44138 GWh/year, at net plant efficiency of 44% and 9422 - 65204 GWh/ year at net plant efficiency of 65%. This range of values
270 corresponds to WCE of 30-80% and MSW generation rates of 0.30-0.80 kg/cap/day.

271 Figure 3: The exploitable WtE in Nigeria for technologies with net plant efficiency of 17-67% at varying WCE (30-80%) and MSW
272 generation rates (0.30-0.80 kg/cap/day)

273 The contour plots in Figure 3 can be used for ascertaining the minimum operating WCE that is required nationally to obtain a given band of
274 exploitable WtE and for technologies with net plant efficiency (NPE) of 17-67%. These plots indicate the limit at which increasing WCE
275 does not correspond to an increasing power output for WtE facilities. For instance, at MSW generation rate of <0.40 kg/cap/day, WtE
276 facilities cannot generate more than 20000 GWh/year of electricity using plants with NPE of 40% or less, even if WCE is increased to 80%.
277 At MSW generation rate of <0.5 kg/cap/day, modern WtE facilities can be employed to generate more than 20000 GWh/year provided
278 minimum NPE of ~33% is met at WCE of 80%. At 0.60 kg/cap/day, 50% WCE can be maintained with a technology such as gasification,
279 otherwise, plants with higher NPEs must be employed at low WCEs (<50%). Assuming a dedicated CHP is in use with 65% NPE, the
280 exploitable WtE can exceed 20000 GWh/year using the following options: 0.30 kg/cap/day at 63% WCE, 0.40 kg/cap/day at 50% WCE,
281 0.50 kg/cap/day at 40% WCE, 0.60 kg/cap/day at WCE of 32%. Figure 3 therefore provides a view of exploitable WtE scales for various
282 waste conversion technologies with net plant efficiencies of 17-67%, and WCE of 30 - 80% and highlights the minimum requirements that
283 are needed to achieve a target WtE potential. These results emphasise the need for national feasibility studies and strategic siting of WtE
284 facilities in Nigeria. It is clearly shown in this study that Lagos and Kano have sufficient capacities, even at poor WCE of 30% and waste
285 generation rates of 0.30 kg/cap/day, which position the states for early development of WtE facilities in Nigeria. Other states will require to
286 improve their waste collection efficiency, explore highly efficient waste conversion technologies, merge supplies from surrounding cities or
287 consider multiple forms of renewable energy sources for large scale power generation. At current low waste collection efficiency in
288 Nigeria, which is not clearly measured for individual states, a minimum regulatory electricity generation requirement of up to 50MW can
289 hinder the development of WtE projects. On-site power generation such as dedicated power station for industrial estates and corporate users
290 can be a feasible form of distributing energy generated from WtE facilities.

291 We therefore propose the following recommendations to maximise the Nigeria's waste-to-energy potential. Firstly, considering the
292 disconnect between policy-makers and stakeholders in solid waste management, there is need for adequate reference and structure for the
293 deployment of WtE projects in Nigeria. We recommend appropriate legal, policy, regulatory, and institutional framework to promote newer
294 and more sustainable energy recovery options from wastes. Secondly, there are opportunities to be explored between the formal and
295 informal sectors within and between the states via strategic partnership to promote a sustainable waste management system and to secure
296 sufficient quantities of waste. Waste management policies that incorporate waste pickers and scavengers can create jobs, reduce
297 environmental damage caused by growing use of disposable goods, and reduce fiscal costs of landfill operations (62). There could be
298 inherent challenges in the cooperation and future competition between MSW firms and waste pickers in the states studied. Evidence from a
299 waste management operator, WestAfricaENRG, which recently acquired the largest landfills in Lagos, indicated some initial operational
300 difficulties and lack of cooperation from scavengers. The informal waste pickers can be organised in cooperative societies and engage
301 directly with government and private sector. The partnership between the key stakeholders will help to organise integration of scavengers
302 and waste pickers in a positive way into the formal sector, and enhance the recycling, recovery and transfer process of waste. This approach
303 is beneficial as it helps the waste pickers can earn higher incomes (63), increase contribution to energy recovery and increase firms' profits

304 by excluding the agent's role in the transfer process (64). Studies in Jordan have alluded to the fact that scavengers have an important role
305 in the informal MSW sector, and are willing to involve municipals, private companies and NGOs to cooperate in strategic planning for
306 MSW (64). Thirdly, Public-Private Partnership (PPP) is suggested to create an enabling environment for service delivery within and
307 between states. Public-Private Partnership is employed in several countries across all levels of the waste chain (65-66). Unlike public
308 dominated waste management systems, PPP can attract investment from the private sector which reduces the operational and construction
309 costs (67-68). The establishment of PPPs will however require defined clear boundaries of operation and roles to prevent institutional
310 borderline problems, overlap of duties and to eliminate voids. Fourthly, lack of quality nation-wide data is a major hindrance to reliable
311 projections. We recommend a nation-wide assessment and open access database and repository of waste composition, characteristics,
312 generation rates, collection, disposal and transportation route and distances across seasons, with independent data quality checks and
313 validation for reliable environmental, cost, socioeconomic life cycle assessments and projections. Collaboration between universities,
314 industry and government for capacity building, collaborative research and knowledge exchange initiatives will be helpful in developing a
315 solid waste masterplan based on reliable feasibility studies. Lastly, due to the perceived concerns on emissions from WtE facilities, there
316 will be need for stringent emission standards and safe disposal of the incineration residues under independent audit and monitoring to
317 ensure environmental protection and assure residents of their safety. Information on the WtE facilities should be open to the public and
318 operators should engage with relevant stakeholders through public hearings and public education on the use of these technologies, so as to
1-319 prevent adverse environmental campaigns. Optimised road networks, transportation routes, and local appropriate equipment and tools, as
2-320 well as effective training of waste management workers, public education will be needed to improve collection efficiency nation-wide and
3-321 to reduce environmental impacts. Further work is required to examine the environmental and economic implications of waste-to-energy
4-322 projects in Nigeria, particularly from a life cycle perspective to highlight the opportunities from averted waste dump and challenges
5-323 presented by energy recovery from MSW. This study has considered mass burn incineration for early development of WtE facilities in
6-324 Nigeria, but not considered the impact of competing technologies on fuel availability or increased technology advancement on plant
7-325 operation; this will be necessary in the future.

19-326 3.3. Sensitivity Analysis

22-327 The analysis in section 3.1-3.2 have considered the treatment of 1200 tonnes of MSW/day, and fuel with fixed composition and calorific
23-328 value, but MSW may vary in composition across seasons, over time and for different locations. Igoni et al. (59) reported a range of 0.8–7.0
24-329 wt.% as received basis (arb) for the ash content in MSW obtained from urban cities in Nigeria. Eboh et al. (60) showed that these values
25-330 can vary as much as 0.04–39.82 wt.% on the dry basis (db). A range of moisture content of 7.8 - 65.2 wt.% arb is cited for MSW from
26-331 developing countries in Igoni et al. (59) and Mohee et al. (61). All these varying qualities in fuel composition can impact the fuel's calorific
27-332 value and reduced or increased quantities of waste can affect net plant efficiency. Thus, to establish the influence of varying waste
28-333 quantities and qualities on plant performance, sensitivity analysis was conducted with fuels of varying waste quantities, moisture levels and
29-334 organic matter-to-ash content.

42-335 Figure 4: Radar chart of the sensitivity analysis: a) waste quantities (tonnes/day), b) moisture content (wt.% as received basis), c) volatile
43-336 matter-to-ash ratio

47-337 Figure 4a shows that a decrease in waste quantity by 5-10 tonnes/hour, corresponding to 960-1080 tonnes/day in this study can increase net
48-338 plant efficiency by 1.5-1.7% while a similar increase in waste quantity, corresponding to 1320-1440 tonnes/day can cause a 4-7% reduction
49-339 in the net efficiency of the WtE facility. The decline in net plant efficiency at increased fuel quantities is attributed to poor conversion rate
50-340 with respect to fuel input rate. Typically, WtE facilities are designed with capacity limits and operational constraints to preserve the life of
51-341 engine components and quality of steam recovered. As such, there is a limit to the amount of fuel that can be consumed and consequently,
52-342 the amount of waste that can be treated for a given configuration to achieve the limits imposed e.g. exhaust gas temperature.

343 Figure 4b shows that the removal of moisture from MSW can increase net plant efficiency. At 0 wt.% arb, the NPE improved by 33% with
344 respect to the baseline fuel scenario, and at 20 wt.% arb, the NPE improved by 22%. The results imply that a 10% reduction in the moisture
345 content of the MSW can improve net plant efficiency of the WtE facility by 4-7%. High moisture levels in waste streams is limiting for
346 energy recovery because the energy that could be derived from the fuel is significantly reduced, which might only be sufficient for part-
347 drying the incoming waste streams. This is particularly important for mass burn incineration, where there is no pre-treatment of the waste.

348 Figure 4c shows that the changes in net efficiency of the WtE facility varied from 1-4% due to varying ratio of organic matter-to-ash
349 content. A change in composition that reduces the organic matter-to-ash ratio of the MSW to 4:1, indicated as volatile matter (80 wt.% db)
350 and ash content (20 wt.% db) in this study, will cause a reduction in NPE by 4%, while an increase in this ratio to 19:1, corresponding to
351 volatile matter content of 95 wt.% db and ash content of 5 wt.% db, can bring about an increase of 3% in NPE. These changes are caused
352 by the effect of fuel composition on fuel calorific value. Figure 5 shows that moisture can significantly reduce the energy content of fuel.
353 Here, the LHV of the MSW is 27.18 MJ/kg at moisture levels of 0 wt.% arb, but 6.68 MJ/kg at moisture levels of 50 wt.% arb. At ash
354 content of 21 wt.% db, the LHV of the MSW is 6.09 MJ/kg and 7.14 MJ/kg at ash content of 3 wt.% db. It is therefore crucial that the waste
355 targeted for waste-to-energy is in sufficient, not excess quantities and of good combustible quality. To minimise loss in plant performance
356 and ascertain the sustainability of WtE facilities, World Bank (26) recommends that waste supply should not be less than 50,000 tonnes
357 annually, equivalent to 137 tonnes/day and waste variations should not be more than 20% at any given time for incineration. The same
1
2358 report recommends that the average fuel lower calorific value should be at least 6 MJ/kg. The composition using a tenner diagram is
3
4
5359 suggested to contain less than moisture 50%, ash content less than 60% and carbon content that is above 25%.

6
7360 Figure 5: Influence of fuel composition on Lower Heating Value of MSW a) moisture content (wt.% arb), b) volatile matter-to-ash
8
9

10 11361 4. Conclusions

12
13
14362 This study conducted a state-level assessment the available WtE potential in Nigeria at various MSW generation rates, collection
15
16
17363 efficiencies and energy conversion technologies. The study showed that the electricity generation energy potential for the different states in
18
19364 Nigeria can vary from 31 - 205 MW at waste generation capacity of 0.53 kg/cap/day, assuming incineration with energy recovery as the
20
21
22365 preferred choice of thermal treatment. This sums up the country's annual electricity generation potential from MSW to be 26744
23
24366 GWh/year, and could be as low as 3768 GWh/year at poor waste generation capacity of 0.30 kg/cap/day and collection efficiency of 30%.
25
26
27367 To this end, we showed that a MSW generation rate of ≥ 0.60 kg/cap/day and WCE $\geq 70\%$ would be required for at least half of the states to
28
29368 own a WtE facility that can connect to the national grid, under a minimum electricity generation requirement of 50 MW. The wide
30
31
32369 variations in the exploitable electricity generation potential across the different states in Nigeria therefore shows the need for proper
33
34370 feasibility assessment of waste generation rates within and between states before siting a WtE facility, to ensure economic viability. The
35
36371 WtE maps in this study can inform the siting of WtE facilities in Nigeria as it shows the minimum operating WCE for an intended WtE
37
38
39372 capacity and for various energy technologies using net plant efficiencies. This is of high importance for the current waste management
40
41373 practices in Nigeria, where there is little information on the true measures of waste generation capacities for different states, and the whole
42
43
44374 country. Waste quantities and qualities can play a significant role in plant's energy recovery; hence sensitivity analysis showed their impact
45
46375 on net plant efficiency. The successful establishment and operation of WtE facilities for MSW in Nigeria will require enabling policies and
47
48
49376 regulations, as well as supportive legal and institutional framework. At low waste collection efficiency, minimum regulatory generation
50
51377 requirement can hinder development of WtE projects due to insufficient waste capacities across the states.
52
53
54
55378

379 **REFERENCES**

- 380 [1] World Bank., 2016a. “Sub-Saharan Africa” in “Global Economic Prospects: Spill overs amid Weak Growth”, World Bank,
381 Washington, DC, pp 153-175
- 382 [2] Castellano, A., Kendall, A., Nikomarov, M., Swemmer, T., 2015. Brighter Africa: The growth potential of the sub-Saharan electricity
383 sector. McKinsey Report, pp 1-64. http://www.mckinsey.com/insights/energy_resources_materials/powering_africa.
- 384 [3] Eberhard, A., Rosnes, O., Shkaratan, M., Vennemo, H., 2011. Africa’s Power Infrastructure: Investment, Integration, Efficiency.
385 Washington, D.C.: World Bank.
- 386 [4] World Bank, 2016b. The World Bank (Online): Electric power consumption (kWh per capita). Available at:
387 <http://data.worldbank.org/indicator/EG.USE.ELEC.KH.PC> (Accessed 5th March 2016).
- 388 [5] Zhang, D. Q., Tan, S. K., Gersberg, R. M., 2010. Municipal solid waste management in China: status, problems and challenges.
389 Journal of Environmental Management, 91(8), 1623-1633.
- 390 [6] Bosmans, A., Vanderreydt, I., Geysen, D. and Helsen, L., 2013. The crucial role of Waste-to-Energy technologies in enhanced
391 landfill mining: a technology review. Journal of Cleaner Production, 55, 10-23.
- 392 [7] Chen, Y.C. and Lo, S.L., 2016. Evaluation of greenhouse gas emissions for several municipal solid waste management strategies.
393 Journal of Cleaner Production, 113, 606-612.
- ¹₂394 [8] Miranda, M. L., Hale, B., 1997. Waste not, want not: the private and social costs of waste-to-energy production. Energy Policy, 25(6),
3 587-600.
4395
- ⁶₇396 [9] Psomopoulos, C. S., Bourka, A., Themelis, N. J., 2009. Waste-to-energy: A review of the status and benefits in USA. Waste
8 1718-1724.
9397
- ¹¹₁₂398 [10] National Renewable Energy and Energy Efficiency Policy (NREEEP), 2014. Energy Commission of Nigeria (ECN) and Federal
13 Ministry of Science and Technology (FMST). Retrieved August 6, 2015, from www.energy.gov.ng.
14399
- ¹⁶₁₇400 [11] Energy Commission of Nigeria (ECN), 2012. Draft National Energy Master Plan.
18 http://www.energy.gov.ng/index.php?option=com_docman&task=doc_download&gid=102&Itemid=49> (last accessed on
19401 06/9/2016).
20
21402
- ²³₂₄403 [12] Ogunbiyi, D., 2012. Embedded Generation Workshop. Lagos State Electricity Board. Available at
25 http://www.detailsolicitors.com/media/archive3/seminars/workshop_on_embedded_power/presentations/NERC%20Workshop%20on%20Embedded%20Generation.pdf
26404
27
- ³¹₃₂406 [13] Iwayemi, A., 2008. Nigeria’s dual energy problems: policy issues and challenges. International Association for Energy Economics,
33407 53, 17-21.
34
- ³⁵₃₆408 [14] Suberu, M.Y., Mokhtar, A.S., Bashir, N., 2012. Renewable power generation opportunity from municipal solid waste: a case study of
37 Lagos Metropolis (Nigeria). J. Energy Technol. Policy, 2(2), 15.
38409
- ⁴⁰₄₁410 [15] Lawal, A., Garba, I., 2013, “Study of the energy potential of solid waste in Bauchi Town”, International Journal of Computational
42 Engineering Research, 3(5), 1-7.
43411
- ⁴⁵₄₆412 [16] Okeniyi, J. O., Anwan, E. U., Okeniyi, E. T., 2012. Waste characterisation and recoverable energy potential using waste generated in
47 a model community in Nigeria. Journal of Environmental Science and Technology, 5(4), 232-240.
48413
- ⁵⁰₅₁414 [17] Tsunatu, D.Y., Tickson, T.S., Sam, K.D., Namu, J.M., 2015. Municipal Solid waste as alternative source of energy generation: a case
52 study of Jalingo metropolis–Taraba State. International Journal of Engineering and Technology, 5(3).
53415
- ⁵⁵₅₆416 [18] McIlveen-Wright, D., Rezvani, S., Huang, Y., Redpath, D., Banire, R., Mirzaii, H., Hewitt, N., 2013. A techno-economic assessment
57 of a proposed energy from waste plant in Lagos State, Nigeria. International Journal of Environment and Resource, 2(4), 89-95.
58417
59
60
61
62
63
64
65

- 418 [19] Udoakah, Y.O.N., Akpan, U.S., 2013, October. A sustainable approach to municipal solid waste management in southern Nigeria. In
419 Global Humanitarian Technology Conference (GHTC), 2013 IEEE (pp. 321-325). IEEE.
- 420 [20] Amoo, O. M., Fagbenle, R. L., 2013. Renewable municipal solid waste pathways for energy generation and sustainable development
421 in the Nigerian context. *International Journal of Energy and Environmental Engineering*, 4(1), 1-17.
- 422 [21] National Population Commission, 2006. National Population Census. Abuja, Nigeria: National Population Commission.
- 423 [22] World Bank. 2012. World Development Indicators, 2012. Washington, DC: World Bank.
- 424 [23] Hoornweg, D. and Bhada-Tata, P., 2012. What a waste: a global review of solid waste management. *Urban Development Series
425 Knowledge Papers*, 15, 1-98.
- 426 [24] Solomon, U.U., 2009. The state of solid waste management in Nigeria. *Waste Management*, 29(10), 2787-2788.
- 427 [25] Bichi, M.H., Amatobi, D.A., 2013. Characterization of household solid waste generated in Sabon-Gari area of Kano in Northern
428 Nigeria. *American Journal of Research Communication*, 1(4), 165-171.
- 429 [26] World Bank, 1999. Municipal solid waste incineration: World Bank Technical Guidance Report. World Bank, Washington.
- 430 [27] Amber, I., Kulla, D.M., Gukop, N., 2012. Generation, characteristics and energy potential of solid municipal waste in Nigeria. *Journal
431 of Energy in Southern Africa*, 23(3), 47-51.
- 432 [28] Ogwueleka, T., 2009. Municipal solid waste characteristics and management in Nigeria. *Journal of Environmental Health Science &
1433 Engineering*, 6(3), 173-180.
- 2
3
434 [29] Nnaji, C.C., 2015. Status of municipal solid waste generation and disposal in Nigeria. *Management of Environmental Quality: An
5 International Journal*, 26(1), 53-71.
- 6
7
8
9436 [30] Abila, N., 2014. Managing municipal wastes for energy generation in Nigeria. *Renewable and Sustainable Energy Reviews*, 37, 182-
10 190
- 11
12
13
14438 [31] Ayotamuno, J.M., Gobo, A.E., 2004. Municipal solid waste management in Port Harcourt, Nigeria: Obstacles and Prospects.
15 *Management of Environmental Quality: An International Journal*, 15(4), 389-398.
- 16
17
18
19440 [32] Kofoworola, O.F., 2007. Recovery and recycling practices in municipal solid waste management in Lagos, Nigeria. *Waste
20 management*, 27(9), 1139-1143.
- 21
22
23
24442 [33] Ogwueleka, T.C., 2003. Analysis of urban solid waste in Nsukka, Nigeria. *Journal of Solid Waste Technology and Management*,
25 29(4), 239-246.
- 26
27
28
29444 [34] Emelumadu, O.F., Azubike, O.C., Nnebue, C.C., FAzubike, N., Sidney-Nnebue, Q.N., 2016. Practice, pattern and challenges of solid
30 waste management in Onitsha metropolis, Nigeria. *American Journal of Public Health Research*, 4(1), 16-22.
- 31
32
33
34446 [35] Anestina, A.I., Adetola, A., Odafe, I.B., 2014. Performance Assessment of solid waste management following private partnership
35 operations in Lagos State, Nigeria. *Journal of Waste Management*, Article ID 868072. <http://dx.doi.org/10.1155/2014/868072>
- 36
37
38448 [36] Audu, G.B., Bogoro, G., Nghalmi, S.M., 2013, Potentials and constraints of household solid waste segregation in Bauchi Metropolis”,
39 *International Research Journal of Arts and Social Sciences*, Vol. 2 No. 4, pp. 99-116
- 40
41
42
43450 [37] Oumarou, M., Dauda, M., Abdulrahim, A., Abubakar, A., 2012, “Characterization and generation of municipal solid waste in north
44 central Nigeria”, *International Journal of Modern Engineering Research*, Vol. 2 No. 5, pp. 3669-3672
- 45
46
47
48452 [38] Nigerian Electricity Supply Industry (NESI), 2015. Nigeria Power Baseline Report. Office of the Vice President in conjunction with
49 Power Africa. August 2015
- 50
51
52
53454 [39] Mohammed, Y.S., Mustafa, M. W., Bashir, N., Mokthar, A. S., 2013. Renewable energy resources for distributed power generation in
54 Nigeria: A review of the potential. *Renewable and Sustainable Energy Reviews*, 22, 257-268
- 55
56
57
58456 [40] Akuru, U. B., Onukwube, I. E., Okoro, O. I., Obe, E. S., 2017. Towards 100% renewable energy in Nigeria. *Renewable and
59 Sustainable Energy Reviews*, 71, 943-953.
- 60
61
62
63
64
65

- 458 [41] Manohar, K. & Adeyanju, Adeyanju, A. A., 2009. Hydro power energy resources in Nigeria. *Journal of Engineering and Applied*
459 *Sciences*, 4(1), 68-73.
- 460 [42] Shaaban, M., Petinrin, J. O., 2014. Renewable energy potentials in Nigeria: Meeting rural energy needs. *Renewable and Sustainable*
461 *Energy Reviews*, 29, 72-84.
- 462 [43] Brimmo, A. T., Sodiq, A., Sofela, S., Kolo, I., 2017. Sustainable energy development in Nigeria: Wind, hydropower, geothermal and
463 nuclear (Vol. 1). *Renewable and Sustainable Energy Reviews*, 74, 474–490
- 464 [44] Ben-Iwo, J., Manovic, V., Longhurst, P., 2016. Biomass resources and biofuels potential for the production of transportation fuels in
465 Nigeria. *Renewable and Sustainable Energy Reviews*, 63, 172-192.
- 466 [45] Scarlat, N., Motola, V., Dallemand, J. F., Monforti-Ferrario, F., Mofor, L., 2013. Evaluation of energy potential of municipal solid
467 waste from African urban areas. *Renewable and Sustainable Energy Reviews*, 50, 1269-1286.
- 468 [46] Ouda, O. K. M., Raza, A. A., Al-Waked, R., Al-Asad, J., Nizami, A-S., 2015. Waste-to-energy potential in the western province of
469 Saudi Arabia. *Journal of King Saud University - Engineering Sciences* <http://doi.org/10.1016/j.jksues.2015.02.002>
- 470 [47] Fazeli, A., Bakhtvar, F., Jahanshaloo, L., Sidik, N. A. C., Bayat, A. E., 2016. Malaysia's stand on municipal solid waste conversion to
471 energy: A review. *Renewable and Sustainable Energy Reviews*, 58, 1007-1016.
- 472 [48] Islam, K. M. N., 2016. Municipal solid waste to energy generation in Bangladesh: possible scenarios to generate renewable electricity
1473 in Dhaka and Chittagong City. *Journal of Renewable Energy*, Article ID 1712370, <http://dx.doi.org/10.1155/2016/1712370>
2
3
- 4474 [49] Reddy, P.J., 2016. *Energy Recovery from Municipal Solid Waste by Thermal Conversion Technologies*. CRC Press.
5
- 6475 [50] Pettersson, A., Niklasson, F. and Richards, T., 2015. Combustion of Wastes in Combined Heat and Power Plants. In *Resource*
7
8
9476 *Recovery to Approach Zero Municipal Waste* (pp. 141-164). CRC Press.
- 10
11477 [51] Moustakas, K., Loizidou, M., 2010. Solid waste management through the application of thermal methods. INTECH Open Access
12
13
14478 *Publisher*.
- 15
16479 [52] Murphy, J. D., McKeogh, E., 2004. Technical, economic and environmental analysis of energy production from municipal solid
17
18480 waste. *Renewable energy*, 29(7), 1043-1057.
- 20
21481 [53] Brereton, C., 1996. Municipal solid waste—incineration, air pollution control and ash management. *Resources, Conservation and*
22
23482 *Recycling*, 16(1), 227-264.
- 24
25
26483 [54] Olorunfemi, F.B., 2011. Landfill development and current practices in Lagos metropolis, Nigeria. *Journal of Geography and Regional*
27
28484 *Planning*, 4(12), 656.
- 29
30
31485 [55] Tillman, D.A., 2012. *Incineration of municipal and hazardous solid wastes*. Elsevier.
- 32
33486 [56] Taherzadeh, M.J., Richards, T. eds., 2015. *Resource recovery to approach zero municipal waste*. CRC Press.
- 34
35487 [57] Tabasová, A., Kropáč, J., Kermes, V., Nemet, A., Stehlík, P., 2012. Waste-to-energy technologies: Impact on environment. *Energy*,
36
37
38488 44(1), 146-155.
- 39
40489 [58] Chaya, W., Gheewala, S.H., 2007. Life cycle assessment of MSW-to-energy schemes in Thailand. *Journal of Cleaner Production*,
41
42
43490 15(15), 1463-1468.
- 44
45491 [59] Igoni, A.H., Ayotamuno, M.J., Ogaji, S.O.T., Probert, S.D., 2007. Municipal solid-waste in Port Harcourt, Nigeria. *Applied Energy*,
46
47
48492 84(6), 664-670.
- 49
50493 [60] Eboh, F.C., Ahlström, P., Richards, T., 2016. Estimating the specific chemical exergy of municipal solid waste. *Energy Science &*
51
52494 *Engineering*, 4(3), pp.217-231.
- 53
54
55495 [61] Mohee, R., Simelane, T., eds., 2015. Future directions of municipal solid waste management in Africa. *Africa Institute of South*
56
57496 *Africa*.
- 58
59
60
61
62
63
64
65

497 [62] Marello, M., Helwege, A., 2014. Solid waste management and social inclusion of waste pickers: opportunities and challenges. GEGI
498 Working Paper, Paper 7, September 2014.

499 [63] Medina, M., 2000. Scavenger cooperatives in Asia and Latin America. *Resources, Conservation and Recycling*, 31(1), 51–69.

500 [64] Aljaradin, M., Persson, K. M., Sood, E., 2015. The role of informal sector in waste management, a case study; Tafila-Jordan.
501 *Resources and Environment*, 5(1), 9-14.

502 [65] Joseph, K., 2006. Stakeholder participation for sustainable waste management. *Habitat International*, 30(4), 863-871.

503 [66] Jamasb, T., Nepal, R., Kiamil, H., 2010. Waste to energy in the UK: policy and institutional issues. *Proceedings of the ICE: Energy*,
504 163(2), 79-86.

505 [67] Song, J., Song, D., Zhang, X. and Sun, Y., 2013. Risk identification for PPP waste-to-energy incineration projects in China. *Energy*
506 *Policy*, 61, 953-962.

507 [68] Wan, Z., Chen, J. and Craig, B., 2015. Lessons learned from Huizhou, China's unsuccessful waste-to-energy incinerator project:
508 Assessment and policy recommendations. *Utilities Policy*, 33, 63-68.

509
510

511
1
2
3
4
5
6
7
8
9
10
11
12
13
14
15
16
17
18
19
20
21
22
23
24
25
26
27
28
29
30
31
32
33
34
35
36
37
38
39
40
41
42
43
44
45
46
47
48
49
50
51
52
53
54
55
56
57
58
59
60
61
62
63
64
65

Figure

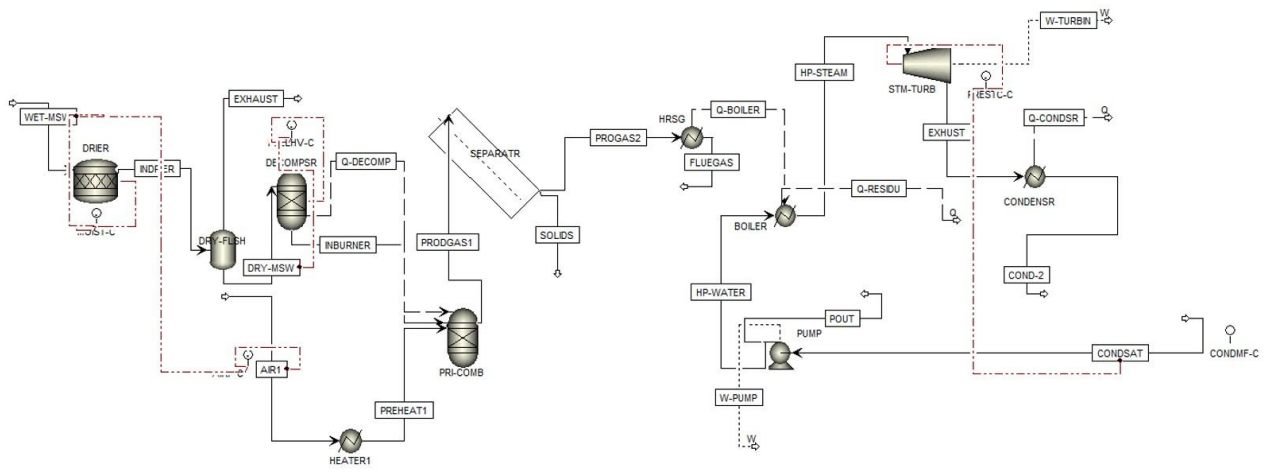


Figure 1: The schematic flow diagram of the waste conversion and energy recovery processes of the MSW

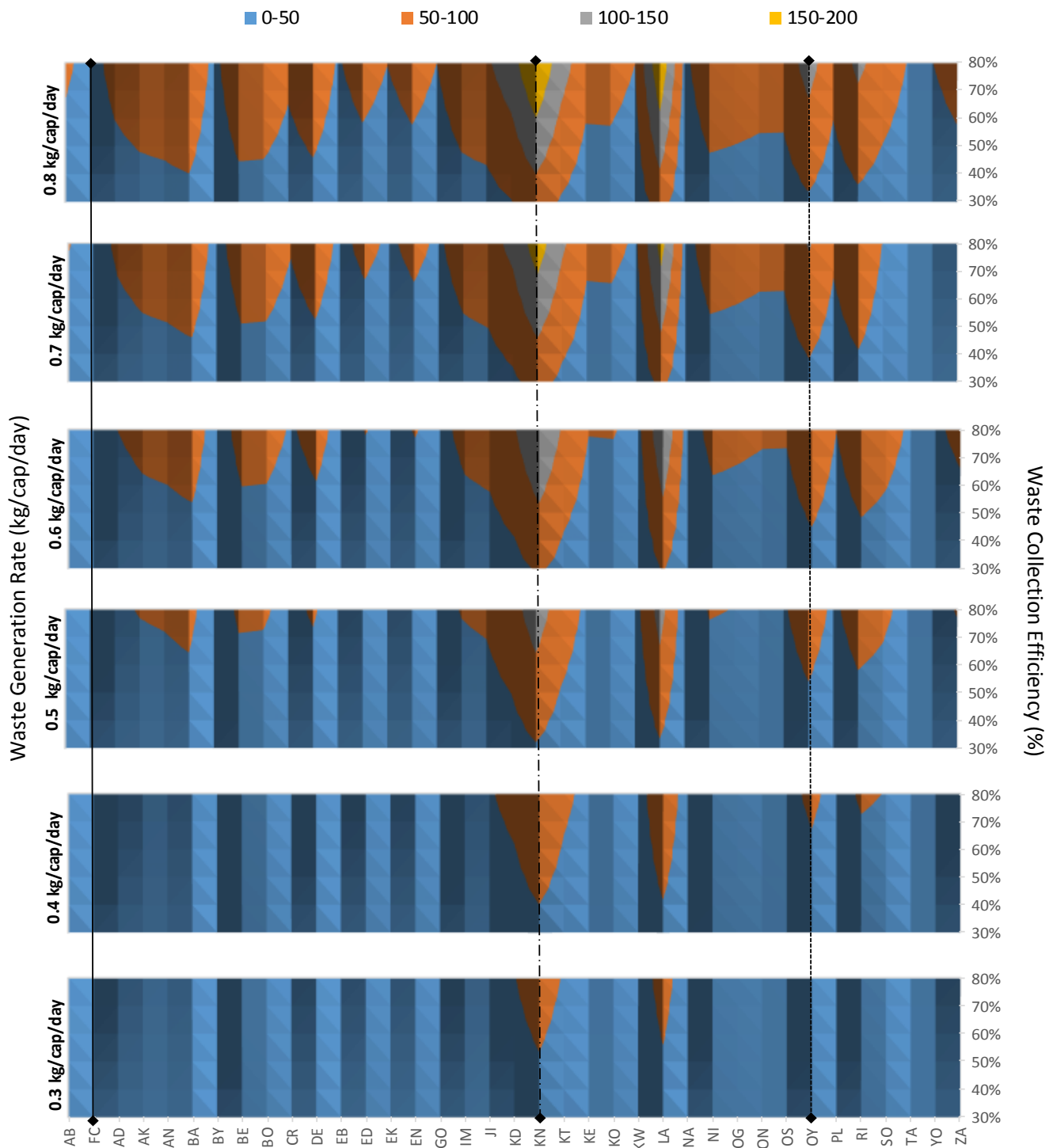


Figure 2: Exploitable Waste-to-Energy (MW) for different states in Nigeria and as a function of Waste Collection Efficiency (30-80%) and MSW generation rate (0.3-0.8 kg/cap/day)

AB-Abia; FCT-Federal Capital Territory, AD-Adamawa, AK-Akwa Ibom, AN-Anambra, BA-Bauchi, BY-Bayelsa, BE-Benue, BO-Borno, CR-Cross River, DE-Delta, EB-Ebenonyi, ED-Edo, EK-Ekiti, EN-Enugu, GO-Gombe, IM-Imo, KD-Kaduna, KN-Kano, KT-Katsina, KE-Kebbi, LA-Lagos, KO-Kobe, KW-Kwara, MA-Maiduguru, NI-Niger, OG-Ogun, ON-Ondo, OS-Osun, OY-Oyo, PL-Plateau, RI-River, SO-Sokoto, TA-Taraba, YO-Yobe, ZA-Zamfara

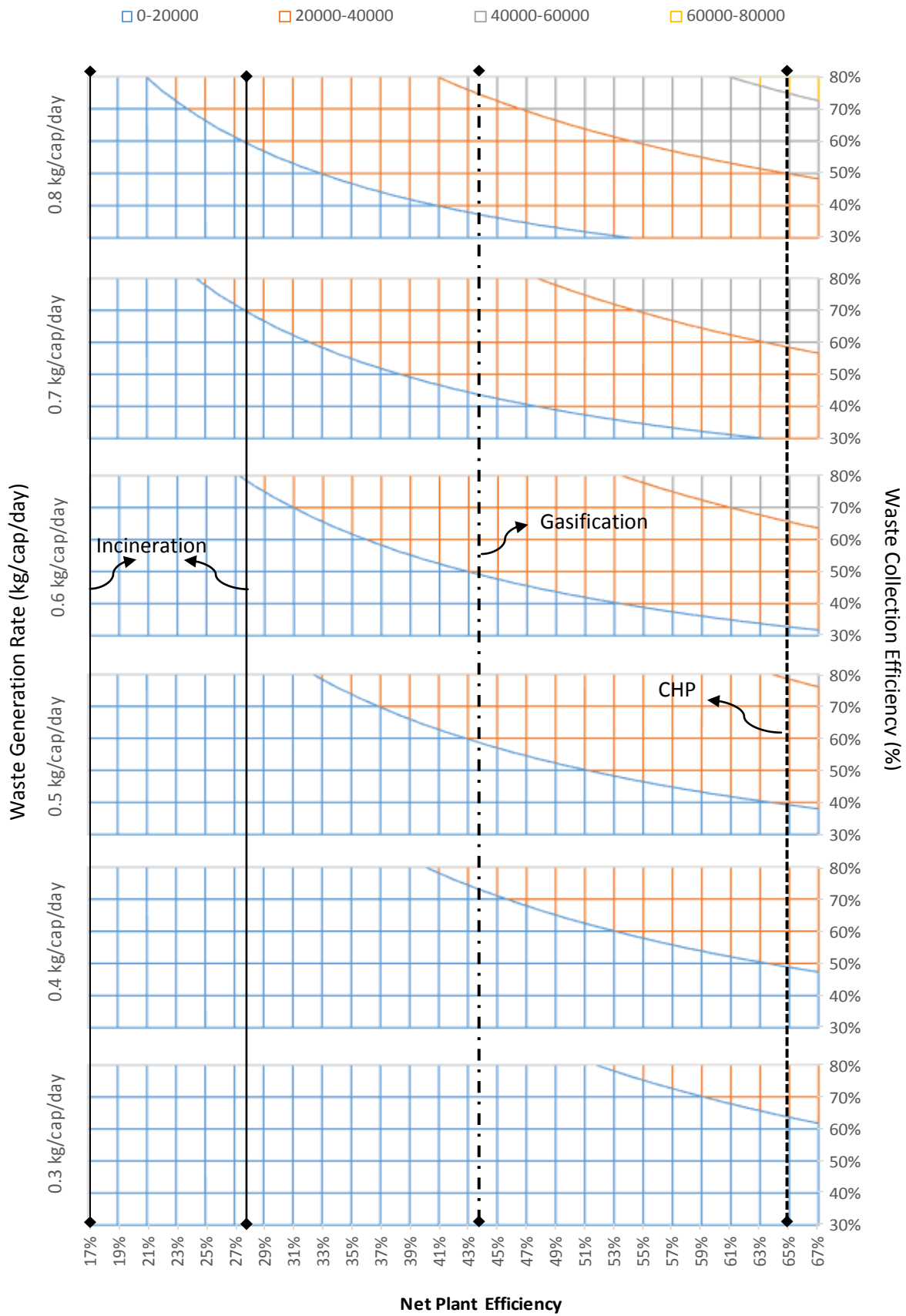


Figure 3: The annual exploitable WtE (MW) in Nigeria for technologies with net plant efficiency of 17-67% at varying WCE (30-80%) and MSW generation rates (0.3-0.8 kg/cap/day)

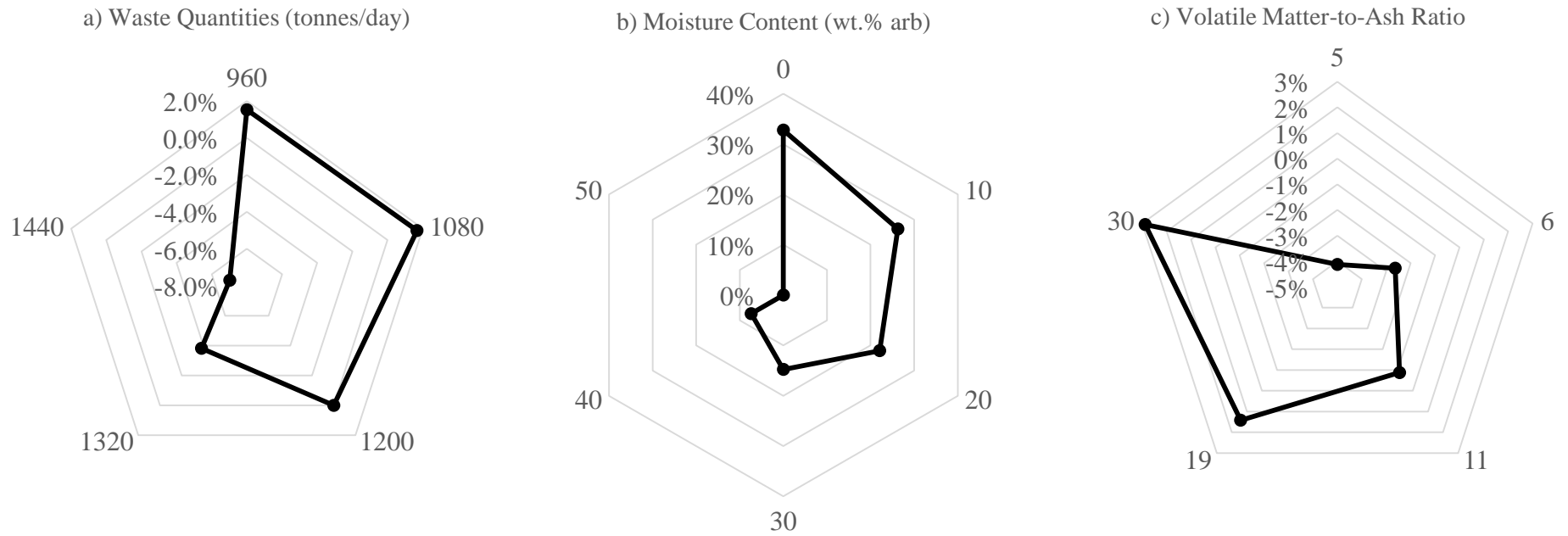


Figure 4: Radar chart of the sensitivity analysis on net plant efficiency: a) waste quantities (tonnes/day) at 50 wt.% moisture as received basis, b) moisture content (wt.% as received basis), c) volatile matter-to-ash at 50 wt.% moisture as received basis

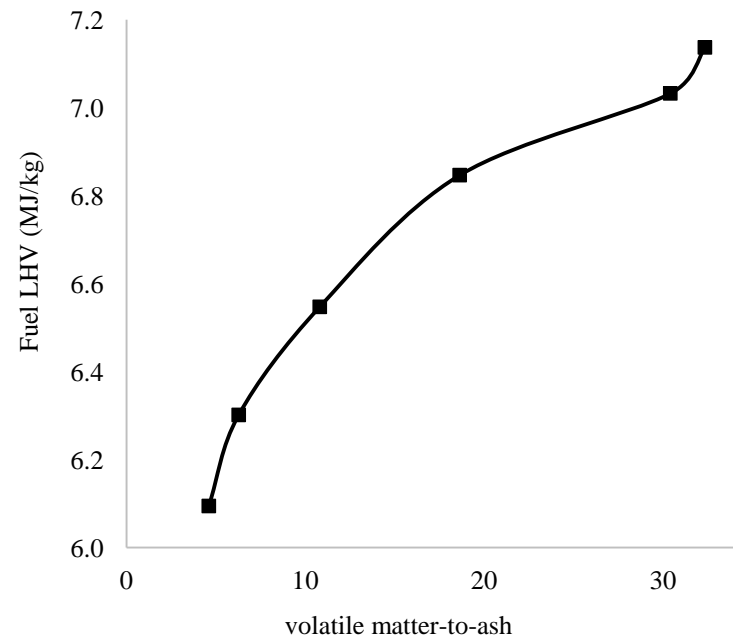
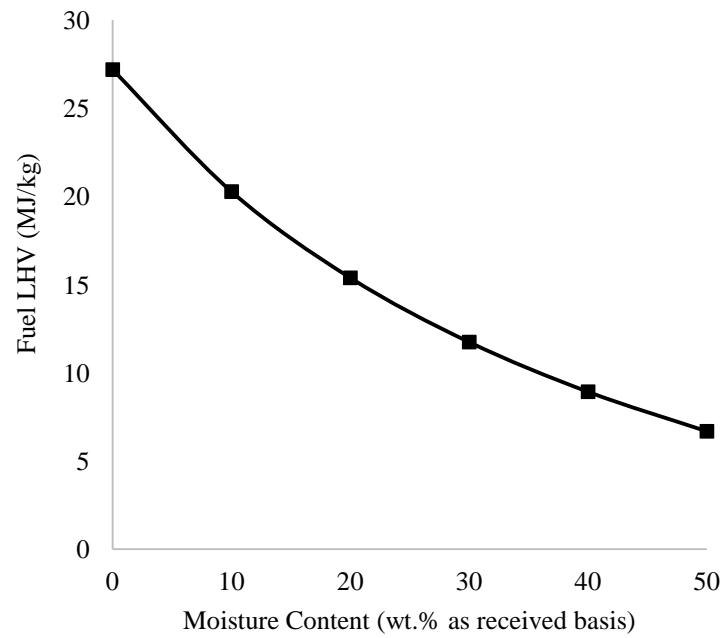


Figure 5: Influence of fuel composition on Lower Heating Value of MSW a) moisture content (wt.% as received basis), b) volatile matter-to-ash at 50 wt.% moisture as received basis

Table 1: Growth Rate Factors and Adjusted Population Size/Year

	2006	2007	2008	2009	2010	2011	2012	2013	2014	2015
Growth Rate Factor (%)	2.68	2.71	2.74	2.77	2.79	2.80	2.81	2.80	2.80	2.80
Total Mean Population (million)	140.0	143.8	147.7	151.8	156.1	160.4	164.9	169.6	174.3	179.2

Table 2: Input Parameters in Aspen Plus® for the Base-case Scenario

ASPEN BLOCK	INPUT PARAMETERS
DECOMPSR	P = 1 Bar; T = 25°C
DRY FLASH	P = 1 Bar; Duty = 0 kW
PRI-COMB	P = 1 Bar
HEATER	P = 1 Bar; T = 25°C
HRSG	Pressure difference = 0 Bar
BOILER	Degree of Supernatant = 0°C; Pressure difference = 0 Bar
PUMP	P = 125 Bar; Pump Efficiency = 90%; Driver Efficiency = 91%;
STM-TURB	Discharge Pressure = 0.19 Bar; Isentropic Efficiency = 88%; Mechanical Efficiency = 98%;
CONDENSR	Degree of Supernatant = 0°C; Pressure difference = 0 Bar

Table 3: The ultimate and proximate compositions of a typical MSW in Nigeria (Amber et al. 2012)

Proximate, wt. % dry wet basis	Moisture Content	Volatile Matter Content	Fixed Carbon	Ash Content		
	49.90	38.28	5.80	5.75		
Ultimate, wt. % dry basis	Carbon	Hydrogen	Nitrogen	Oxygen	Sulphur	Chlorine
	51.30	6.77	1.42	30.12	1.34	0.38
LHV, dry basis (MJ/kg)	17.32					

Table 4: Electricity Generation Potential (MW) at MSW generation rate of 0.53 and 0.8 kg/cap/day

States in Nigeria	0.53 kg/cap/day	0.80 kg/cap/day
Abia (AB)	62	94
Abuja (FCT)	31	47
Adamawa (AD)	69	105
Akwa Ibom (AI)	85	130
Anambra (AN)	91	139
Bauchi (BA)	102	155
Bayelsa (BY)	37	57
Benue (BE)	92	140
Borno (BO)	91	138
Cross River (CR)	63	96
Delta (DT)	89	136
Ebonyi (EB)	47	72
Edo (ED)	70	107
Ekiti (EK)	52	79
Enugu (EN)	71	108
Gombe (GB)	51	78
Imo (IM)	86	131
Jigawa (JG)	95	145
Kaduna (KD)	132	202
Kano (KN)	205	312
Katsina (KS)	126	192
Kebbi (KB)	71	108
Kogi (KG)	71	109
Kwara (KW)	52	79
Lagos (LG)	197	300
Nasarawa (NS)	41	62
Niger (NG)	86	131
Ogun (OG)	81	124
Ondo (ON)	75	114
Osun (OS)	75	114
Oyo (OY)	122	186
Plateau (PT)	69	106
Rivers (RV)	113	172
Sokoto (SO)	81	123
Taraba (TA)	50	76
Yobe (YB)	51	77
Zamfara (ZA)	71	108
Total WtE Potential (MW)	3053	4652
Annual WtE Potential (GWh/year)	28527	40753